

Product datasheet for TP317975L

STON1 (NM_006873) Human Recombinant Protein

Product data:

Product Type:	Recombinant Proteins
Description:	Recombinant protein of human stonin 1 (STON1), 1 mg
Species:	Human
Expression Host:	HEK293T
Expression cDNA Clone or AA Sequence:	>RC217975 protein sequence Red=Cloning site Green=Tags(s)

MCSTNPGKWWTFDDDDPAVQSSQKSKNFLENQGVCRPNGLKLNLPGLREFPSGSSSTSSTPLSSPIVDFY
FSPGPPSNSPLSTPTKDFGFGIPKAGTHVLYPIPESSSDSPLAISGGESSLLPRTPTCLSHALLPSDH
SCTHPTPKVGLPDEVNPQQAESLGFQSDDLQFQYFREDCAFSSPFWKDEGSDSHFTLDPPGSKKMFSSR
NKEMPIDQKSLNKCSLNYICEKLEHLQSAENQDSLRLSMHCLCAEENASSFVPHTLFRSQPKSGWSFML
RIPEKKNMMSSRQWGPIFLKVLPGGILQMYEYQGLEKPFKEIQLDPYCRLSEPKVENFSVAGKIHTVKIE
HVSYTEKRKYHSKTEVVHEPDIEQMLKLGSTSYHDFLDLTTVEELMKLPAVSKPKKNYEEQEISLEIV
DNFWGKVTKEGKFVESAVITQMYCLCFVNGNLECFLLNDLELPKRDESYYEKDSEKKGIDILDYHFHKC
VNVQEFEQSRIIKFVPLDACRFELMRFKTLYNGDNLPSLSKSVVVVQAYVELQAFVNMAQLAQRSSYAG
SLRSCDNIRIHFPVPSQWIKALWTMNLQRQKSLKAKMNRRACLGSLQELESEPIQVTVGSAKYESAYQA
VWKIDRLPDKNSSLDHPHCLSYKLELGSQDEIPSDWYFPATVQFVSPDTCASRTEVRSLSGVESDVQPQK
HVQQRACYNIQVEIEKKWIKIDGEDPPDKIGDCITQ

TRTRPLEQKLISEEDLAANDILDYKDDDDKV

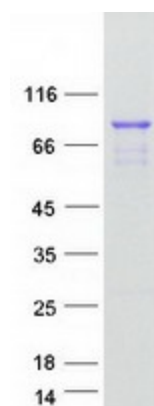
Tag:	C-Myc/DDK
Predicted MW:	83 kDa
Concentration:	>0.05 µg/µL as determined by microplate BCA method
Purity:	> 80% as determined by SDS-PAGE and Coomassie blue staining
Buffer:	25 mM Tris-HCl, 100 mM glycine, pH 7.3, 10% glycerol
Preparation:	Recombinant protein was captured through anti-DDK affinity column followed by conventional chromatography steps.
Note:	For testing in cell culture applications, please filter before use. Note that you may experience some loss of protein during the filtration process.
Storage:	Store at -80°C.



[View online »](#)

Stability:	Stable for 12 months from the date of receipt of the product under proper storage and handling conditions. Avoid repeated freeze-thaw cycles.
RefSeq:	NP_006864
Locus ID:	11037
UniProt ID:	Q9Y6Q2 , B2RB25
RefSeq Size:	5534
Cytogenetics:	2p16.3
RefSeq ORF:	2205
Synonyms:	SALF; SBLF; STN1; STNB1
Summary:	Endocytosis of cell surface proteins is mediated by a complex molecular machinery that assembles on the inner surface of the plasma membrane. This gene encodes one of two human homologs of the <i>Drosophila melanogaster</i> stoned B protein. This protein is related to components of the endocytic machinery and exhibits a modular structure consisting of an N-terminal proline-rich domain, a central region of homology specific to the human stoned B-like proteins, and a C-terminal region homologous to the mu subunits of adaptor protein (AP) complexes. Read-through transcription of this gene into the neighboring downstream gene, which encodes TFIIA-alpha/beta-like factor, generates a transcript (SALF), which encodes a fusion protein comprised of sequence sharing identity with each individual gene product. Alternative splicing results in multiple transcript variants. [provided by RefSeq, Oct 2010]
Protein Families:	Transcription Factors
Protein Pathways:	Basal transcription factors

Product images:



Coomassie blue staining of purified STON1 protein (Cat# [TP317975]). The protein was produced from HEK293T cells transfected with STON1 cDNA clone (Cat# [RC217975]) using MegaTran 2.0 (Cat# [TT210002]).