

Product datasheet for TP317958L

G0 Protein alpha (GNAO1) (NM_020988) Human Recombinant Protein

Product data:

Product Type:	Recombinant Proteins
Description:	Recombinant protein of human guanine nucleotide binding protein (G protein), alpha activating activity polypeptide O (GNAO1), transcript variant 1, 1 mg
Species:	Human
Expression Host:	HEK293T
Expression cDNA Clone or AA Sequence:	>RC217958 representing NM_020988 Red =Cloning site Green =Tags(s)
	<p>MGCTLSAEERAALERSKAIEKNLKEDGISAADVKLLLLGAGESGKSTIVKQMKIIHEDGFSGEDVKQYK PVVYSNTIQSLAAIVRAMDTLGIEYGDKERKADAKMVCDVWSRMEDETPFSAELLSAMMRLWGDSGIQEC FNRSREYQLNDSAKYYLDSLDRIGAADYQPTEQDILRTRVKTGIVETHFTFKNLHFRFLFDVGGQRSEK KWIHCFEDVTAIFCVALSQYDQVLHEDETTNRMHESLMLFDSICNKKFFIDTSIILFLNKKDLFGEKIK KSPLTICFPEYTGPNTYEDAAAYIQAQFESKNRSPNKEIYCHMTCATDTNNIQWVFDVAVTDIIIANNLRG CGLY</p> <p>TRTRPLEQKLISEEDLAANDILDYKDDDDKV</p>
Tag:	C-Myc/DDK
Predicted MW:	39.9 kDa
Concentration:	>0.05 µg/µL as determined by microplate BCA method
Purity:	> 80% as determined by SDS-PAGE and Coomassie blue staining
Buffer:	25 mM Tris-HCl, 100 mM glycine, pH 7.3, 10% glycerol
Preparation:	Recombinant protein was captured through anti-DDK affinity column followed by conventional chromatography steps.
Note:	For testing in cell culture applications, please filter before use. Note that you may experience some loss of protein during the filtration process.
Storage:	Store at -80°C.
Stability:	Stable for 12 months from the date of receipt of the product under proper storage and handling conditions. Avoid repeated freeze-thaw cycles.
RefSeq:	<u>NP_066268</u>



[View online »](#)

Locus ID: 2775

UniProt ID: [P09471](#), [B3KP89](#), [Q8N6I9](#)

RefSeq Size: 3332

Cytogenetics: 16q13

RefSeq ORF: 1062

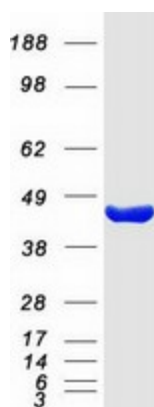
Synonyms: DEE17; EIEE17; G-ALPHA-o; GNAO; HLA-DQB1; NEDIM

Summary: The protein encoded by this gene represents the alpha subunit of the Go heterotrimeric G-protein signal-transducing complex. Defects in this gene are a cause of early-onset epileptic encephalopathy. Two transcript variants encoding different isoforms have been found for this gene. [provided by RefSeq, Aug 2015]

Protein Families: Druggable Genome

Protein Pathways: Long-term depression, Melanogenesis

Product images:



Coomassie blue staining of purified GNAO1 protein (Cat# [TP317958]). The protein was produced from HEK293T cells transfected with GNAO1 cDNA clone (Cat# [RC217958]) using MegaTran 2.0 (Cat# [TT210002]).