

Product datasheet for **TP317935L**

LILRB2 (NM_001080978) Human Recombinant Protein

Product data:

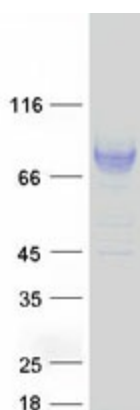
Product Type:	Recombinant Proteins
Description:	Recombinant protein of human leukocyte immunoglobulin-like receptor, subfamily B (with TM and ITIM domains), member 2 (LILRB2), transcript variant 2, 1 mg
Species:	Human
Expression Host:	HEK293T
Expression cDNA Clone or AA Sequence:	>RC217935 protein sequence Red =Cloning site Green =Tags(s)
	<p>MTPIVTVLICLGLSLGPRTHVQTGTIPKPTLWAEPDSVITQGSPVTLSCQGSLEAQEYRLYREKKSASWI TRIRPELVKNGQFHIPSITWEHTGRYGCQYYSRARWSELSDPLVLVMTGAYPKPTLSAQSPVVTSGGRV TLQCESQVAFGGFILCKEGEDEHPQCLNSQPHARGSSRAIFSVGPVSPNRRWSHRCYGYDLNSPYWSSP SDLLELLVPGVSKKPSLSVQPGPVVAPGESLTLCVSDVGYDRFVLYKEGERDLRQLPGRQPQAGLSQAN FTLGPVRSYGGQYRCYGAYNLSSEWSAPSDPLDILITGQIHGTPFISVQPGPTVASGENVTLLCQSWRQ FHTFLLTKAGAADAPLRLRSIHEYPKYQAEFPMSPVTSAHAGTYRCYGLNSDPYLLSHPSEPLELVSG PSMGSSPPPTGPSTPAGPEDQPLTPTGSDPQSGGLGRHLGVVIGILVAVLLLLLLLLLFLILRHRQ GK HWTSTQRKADFQHPAGAVGPEPTDRGLQWRSSPAADAQEENLYAAVKDTQPEDGVEMDTRAAASEAPQDV TYAQLHSLTLRRKATEPPPSQEGEPPAEPsiyatLAIH</p> <p>TRTRPLEQKLISEEDLAANDILDYKDDDDKV</p>
Tag:	C-Myc/DDK
Predicted MW:	64.8 kDa
Concentration:	>0.05 µg/µL as determined by microplate BCA method
Purity:	> 80% as determined by SDS-PAGE and Coomassie blue staining
Buffer:	25 mM Tris-HCl, 100 mM glycine, pH 7.3, 10% glycerol
Preparation:	Recombinant protein was captured through anti-DDK affinity column followed by conventional chromatography steps.
Note:	For testing in cell culture applications, please filter before use. Note that you may experience some loss of protein during the filtration process.
Storage:	Store at -80°C.



[View online »](#)

Stability:	Stable for 12 months from the date of receipt of the product under proper storage and handling conditions. Avoid repeated freeze-thaw cycles.
RefSeq:	NP_001074447
Locus ID:	10288
UniProt ID:	A2IXV5
RefSeq Size:	2937
Cytogenetics:	19q13.42
RefSeq ORF:	1794
Synonyms:	CD85D; ILT-4; ILT4; LIR-2; LIR2; MIR-10; MIR10
Summary:	This gene is a member of the leukocyte immunoglobulin-like receptor (LIR) family, which is found in a gene cluster at chromosomal region 19q13.4. The encoded protein belongs to the subfamily B class of LIR receptors which contain two or four extracellular immunoglobulin domains, a transmembrane domain, and two to four cytoplasmic immunoreceptor tyrosine-based inhibitory motifs (ITIMs). The receptor is expressed on immune cells where it binds to MHC class I molecules on antigen-presenting cells and transduces a negative signal that inhibits stimulation of an immune response. It is thought to control inflammatory responses and cytotoxicity to help focus the immune response and limit autoreactivity. Multiple transcript variants encoding different isoforms have been found for this gene. [provided by RefSeq, Jul 2008]
Protein Families:	Transmembrane

Product images:



Coomassie blue staining of purified LILRB2 protein (Cat# [TP317935]). The protein was produced from HEK293T cells transfected with LILRB2 cDNA clone (Cat# [RC217935]) using MegaTran 2.0 (Cat# [TT210002]).