

Product datasheet for **TP317905M**

Myosin Phosphatase 2 (PPP1R12B) (NM_032104) Human Recombinant Protein

Product data:

Product Type:	Recombinant Proteins
Description:	Recombinant protein of human protein phosphatase 1, regulatory (inhibitor) subunit 12B (PPP1R12B), transcript variant 4, 100 µg
Species:	Human
Expression Host:	HEK293T
Expression cDNA Clone or AA Sequence:	>RC217905 representing NM_032104 Red =Cloning site Green =Tags(s)
	MDKNENEEADLDEQSSKRLSIRERRRRPKERRRRGTGINFWTKDEDETDGSEEVKETWHERLSRLESGGNSP TTSDSYGDRASARREAREARLATLSRVEEDSNRDYKKLYESALTENQKLKTKLQEAQLELADIKSKL EKVAQQKQEKTSRSSHVLEMEKRERRALERKMSEMEEEMKNLHQLKQIQTLKQMNEQLQAENRALTRVVA RLSESISSDTQEL
	TRTRPLEQKLISEEDLAANDILDYKDDDDKV
Tag:	C-Myc/DDK
Predicted MW:	26.1 kDa
Concentration:	>0.05 µg/µL as determined by microplate BCA method
Purity:	> 80% as determined by SDS-PAGE and Coomassie blue staining
Buffer:	25 mM Tris-HCl, 100 mM glycine, pH 7.3, 10% glycerol
Preparation:	Recombinant protein was captured through anti-DDK affinity column followed by conventional chromatography steps.
Note:	For testing in cell culture applications, please filter before use. Note that you may experience some loss of protein during the filtration process.
Storage:	Store at -80°C.
Stability:	Stable for 12 months from the date of receipt of the product under proper storage and handling conditions. Avoid repeated freeze-thaw cycles.
RefSeq:	NP_115287
Locus ID:	4660



[View online »](#)

UniProt ID: [O60237](#)

RefSeq Size: 2227

Cytogenetics: 1q32.1

RefSeq ORF: 672

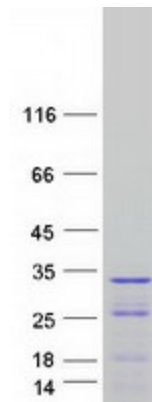
Synonyms: MYPT2; PP1bp55

Summary: Myosin phosphatase is a protein complex comprised of three subunits: a catalytic subunit (PP1c-delta, protein phosphatase 1, catalytic subunit delta), a large regulatory subunit (MYPT, myosin phosphatase target) and small regulatory subunit (sm-M20). Two isoforms of MYPT have been isolated--MYPT1 and MYPT2, the first of which is widely expressed, and the second of which may be specific to heart, skeletal muscle, and brain. Each of the MYPT isoforms functions to bind PP1c-delta and increase phosphatase activity. This locus encodes both MYPT2 and M20. Alternatively spliced transcript variants encoding different isoforms have been identified. Related pseudogenes have been defined on the Y chromosome. [provided by RefSeq, Oct 2011]

Protein Families: Druggable Genome

Protein Pathways: Vascular smooth muscle contraction

Product images:



Coomassie blue staining of purified PPP1R12B protein (Cat# [TP317905]). The protein was produced from HEK293T cells transfected with PPP1R12B cDNA clone (Cat# [RC217905]) using MegaTran 2.0 (Cat# [TT210002]).