

## Product datasheet for **TP317900**

### **RAB27A (NM\_183234) Human Recombinant Protein**

#### Product data:

**Product Type:** Recombinant Proteins  
**Description:** Recombinant protein of human RAB27A, member RAS oncogene family (RAB27A), transcript variant 2, 20 µg

**Species:** Human

**Expression Host:** HEK293T

**Expression cDNA Clone or AA Sequence:** >RC217900 protein sequence  
**Red**=Cloning site **Green**=Tags(s)

MSDGDYDYLIKFLALGDSGVGKTSVLYQYTDGKFNSKFITTVGIDFREKRVVYRASGPDGATGRGQRIHL  
QLWDTAGQERFRSLTTAFFRDAMGFLLLFDLTNEQSFLNVRNWISQLQMHAYCENPDIVLCGNKSDLEDQ  
RVVKEEEAIALAEKYGIPYFETSAANGTNISQAIEMLLDLIMKRMERCVDKSWIPEGVWRSNGHASTDQL  
SEEKEKGACGC

**TRTRPLEQKLISEEDLAANDILDYKDDDDKV**

**Tag:** C-Myc/DDK

**Predicted MW:** 24.7 kDa

**Concentration:** >0.05 µg/µL as determined by microplate BCA method

**Purity:** > 80% as determined by SDS-PAGE and Coomassie blue staining

**Buffer:** 25 mM Tris-HCl, 100 mM glycine, pH 7.3, 10% glycerol

**Preparation:** Recombinant protein was captured through anti-DDK affinity column followed by conventional chromatography steps.

**Note:** For testing in cell culture applications, please filter before use. Note that you may experience some loss of protein during the filtration process.

**Storage:** Store at -80°C.

**Stability:** Stable for 12 months from the date of receipt of the product under proper storage and handling conditions. Avoid repeated freeze-thaw cycles.

**RefSeq:** [NP\\_899057](#)

**Locus ID:** 5873



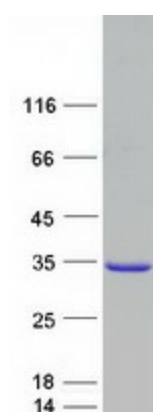
[View online »](#)

UniProt ID: [P51159](#), [A2RU94](#)  
RefSeq Size: 3455  
Cytogenetics: 15q21.3  
RefSeq ORF: 663  
Synonyms: GS2; HsT18676; RAB27; RAM

**Summary:** The protein encoded by this gene belongs to the small GTPase superfamily, Rab family. The protein is membrane-bound and may be involved in protein transport and small GTPase mediated signal transduction. Mutations in this gene are associated with Griscelli syndrome type 2. Alternative splicing occurs at this locus and four transcript variants encoding the same protein have been identified. [provided by RefSeq, Jul 2008]

**Protein Families:** Druggable Genome

### Product images:



Coomassie blue staining of purified RAB27A protein (Cat# TP317900). The protein was produced from HEK293T cells transfected with RAB27A cDNA clone (Cat# [RC217900]) using MegaTran 2.0 (Cat# [TT210002]).