

## Product datasheet for TP317885L

### SNF5 (SMARCB1) (NM\_001007468) Human Recombinant Protein

#### Product data:

Product Type:	Recombinant Proteins
Description:	Recombinant protein of human SWI/SNF related, matrix associated, actin dependent regulator of chromatin, subfamily b, member 1 (SMARCB1), transcript variant 2, 1 mg
Species:	Human
Expression Host:	HEK293T
Expression cDNA Clone or AA Sequence:	>RC217885 protein sequence <b>Red</b> =Cloning site <b>Green</b> =Tags(s)

MMMMALSKTFGQKPKVKFQLEDDGEFYMIGSEVGNLYRMFRGSLYKRYPSLWRRRLATVEERKKIVASSHDH  
GYTTLATSVTLKASEVEEILDGNDEKYKAVSISTEPPTYLREQKAKRNSQWVPTLPNSSHHLDAVPCST  
TINRNRMGRDKKRTFPLCFDDHDPVAVIHENASQPEVLVPIRLDMEIDGQKLRDAFTWNMNEKLMTPMFMS  
EILCDDLNLNPLTFVPAIASAIRQQIESYPTDSILEDQSDQRVVIKLNHVGNIISLVDQFEWDMSEKENS  
PEKFAKLCSELGLGGEFVTTIAYSIRGQLSWHQKTYAFSENPLPTVEIAIRNTGDADQWCPLLETLTDA  
EMEKKIRDQRNTRRMRLANTAPAW

**TRTRPLEQKLISEEDLAANDILDYKDDDDKV**

Tag:	C-Myc/DDK
Predicted MW:	43 kDa
Concentration:	>0.05 µg/µL as determined by microplate BCA method
Purity:	> 80% as determined by SDS-PAGE and Coomassie blue staining
Buffer:	25 mM Tris-HCl, 100 mM glycine, pH 7.3, 10% glycerol
Preparation:	Recombinant protein was captured through anti-DDK affinity column followed by conventional chromatography steps.
Note:	For testing in cell culture applications, please filter before use. Note that you may experience some loss of protein during the filtration process.
Storage:	Store at -80°C.
Stability:	Stable for 12 months from the date of receipt of the product under proper storage and handling conditions. Avoid repeated freeze-thaw cycles.
RefSeq:	<u><a href="#">NP_001007469</a></u>



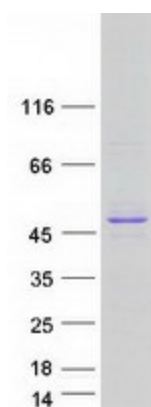
[View online »](#)

Locus ID:	6598
UniProt ID:	<a href="#">Q12824</a>
RefSeq Size:	1690
Cytogenetics:	22q11
RefSeq ORF:	1128
Synonyms:	BAF47; CSS3; hSNFS; INI1; MRD15; PPP1R144; RDT; RTPS1; Sfh1p; SNF5; SNF5L1; Snr1; SWNTS1

**Summary:** The protein encoded by this gene is part of a complex that relieves repressive chromatin structures, allowing the transcriptional machinery to access its targets more effectively. The encoded nuclear protein may also bind to and enhance the DNA joining activity of HIV-1 integrase. This gene has been found to be a tumor suppressor, and mutations in it have been associated with malignant rhabdoid tumors. Alternatively spliced transcript variants have been found for this gene. [provided by RefSeq, Dec 2015]

**Protein Families:** Transcription Factors

### Product images:



Coomassie blue staining of purified SMARCB1 protein (Cat# [TP317885]). The protein was produced from HEK293T cells transfected with SMARCB1 cDNA clone (Cat# [RC217885]) using MegaTran 2.0 (Cat# [TT210002]).