

Product datasheet for TP317830

REPS2 (NM_001080975) Human Recombinant Protein

Product data:

Product Type: Recombinant Proteins

Description: Recombinant protein of human RALBP1 associated Eps domain containing 2 (REPS2), transcript variant 2, 20 µg

Species: Human

Expression Host: HEK293T

Expression cDNA Clone or AA Sequence: >RC217830 representing NM_001080975
Red=Cloning site Green=Tags(s)

MEAAAAAAAAAAAAAAAAAGGGCGSGPPPLLLSEGEQQCYSELFARCAGAAGGGPGSGPPEAARVAPGTATA
AAGPVADLFRASQLPAETLHQITELCGAKRVGYFGPTQFYIALKLIAAAQSGPLVRIESIKCELPLPRFM
MSKNDGEIRFGNPAELHGTVQIPYLTTEKNSFKRMDDEDKQETQSPMSPLASPPSSPPHYQRVPLSHG
YSKLRSSAEQMHPAPYEARQPLVQPEGSSSGPGTKPLRHQASLIRSFVERELQDNSSYPDEPWRITEE
QREYYVNQFRSLQDPSSFISGSVAKNFFTKSLSIPELSYIWELSDADCDGALTLPFCAAFHLIVARK
NGYPLPEGLPPTLQPEYLQAAFPPKPKWDCQLFDSYSEL PANQQPRDLNRMKTSVKDMADLPVNPQDVT
SDDKQALKSTINEALPKDVSEDPATPKDSNSL KARPRRSYSSTSIEEAMKRGEDPPTPPRPQKTHSRA
SSLDLNKVFQPSVPATKSGLLPPPPALPPRPCPSQSEQVSEAE LLPQLSRAPSQA AESSPAKKDVLVSQP
PSKPIRRKFRPENQATENQEPSTAASGPASAATMKPHPTVQKQSSKQKKAIQTAIRKNKEANAVLARLNS
ELQQQLKEVHQERIALENQLEQLRPVTVL

TRTRPLEQKLISEEDLAANDILDYKDDDDKV

Tag: C-Myc/DDK

Predicted MW: 71.2 kDa

Concentration: >0.05 µg/µL as determined by microplate BCA method

Purity: > 80% as determined by SDS-PAGE and Coomassie blue staining

Buffer: 25 mM Tris-HCl, 100 mM glycine, pH 7.3, 10% glycerol

Preparation: Recombinant protein was captured through anti-DDK affinity column followed by conventional chromatography steps.

Note: For testing in cell culture applications, please filter before use. Note that you may experience some loss of protein during the filtration process.

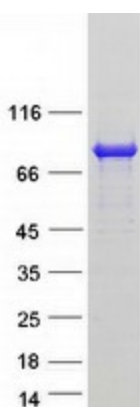
Storage: Store at -80°C.



[View online »](#)

Stability:	Stable for 12 months from the date of receipt of the product under proper storage and handling conditions. Avoid repeated freeze-thaw cycles.
RefSeq:	NP_001074444
Locus ID:	9185
UniProt ID:	Q8NFH8
RefSeq Size:	7961
Cytogenetics:	Xp22.2
RefSeq ORF:	1977
Synonyms:	POB1
Summary:	The product of this gene is part of a protein complex that regulates the endocytosis of growth factor receptors. The encoded protein directly interacts with a GTPase activating protein that functions downstream of the small G protein Ral. Its expression can negatively affect receptor internalization and inhibit growth factor signaling. Multiple transcript variants encoding different isoforms have been found for this gene. [provided by RefSeq, Jul 2008]

Product images:



Coomassie blue staining of purified REPS2 protein (Cat# TP317830). The protein was produced from HEK293T cells transfected with REPS2 cDNA clone (Cat# [RC217830]) using MegaTran 2.0 (Cat# [TT210002]).