

## Product datasheet for **TP317813M**

### LAPTM5 (NM\_006762) Human Recombinant Protein

#### Product data:

Product Type:	Recombinant Proteins
Description:	Recombinant protein of human lysosomal multispinning membrane protein 5 (LAPTM5), 100 µg
Species:	Human
Expression Host:	HEK293T
Expression cDNA Clone or AA Sequence:	>RC217813 protein sequence <b>Red</b> =Cloning site <b>Green</b> =Tags(s)

MDPRLSTVRQTCCCFNVRIATTALAIYHVIMSVLLFIEHSVEVAHGKASCKLSQMGYLRIADLISSFLLI  
TMLFIISLLIGVVKNREKYLLPFLSLQIMDYLLCLLTLGSIYELPAYLKLASRSRASSSKFPLMTLQ  
LLDFCLSILTLCSSYMEVPTYLNFKSMNHMNYLPSQEDMPHNQFIKMMIIFSIAFITVLIFKVYMFKCVW  
RCYRLIKCMNSVEEKKNSKMLQKVVLPSEALSPLSKTPEGGPAPPYSEV

**TRTRPLEQKLISEEDLAANDILDYKDDDDKV**

Tag:	C-Myc/DDK
Predicted MW:	29.8 kDa
Concentration:	>0.05 µg/µL as determined by microplate BCA method
Purity:	> 80% as determined by SDS-PAGE and Coomassie blue staining
Buffer:	25 mM Tris-HCl, 100 mM glycine, pH 7.3, 10% glycerol
Preparation:	Recombinant protein was captured through anti-DDK affinity column followed by conventional chromatography steps.
Note:	For testing in cell culture applications, please filter before use. Note that you may experience some loss of protein during the filtration process.
Storage:	Store at -80°C.
Stability:	Stable for 12 months from the date of receipt of the product under proper storage and handling conditions. Avoid repeated freeze-thaw cycles.
RefSeq:	<u><a href="#">NP_006753</a></u>
Locus ID:	7805



[View online »](#)

UniProt ID: [Q13571](#), [Q5TBB8](#)

RefSeq Size: 2240

Cytogenetics: 1p35.2

RefSeq ORF: 786

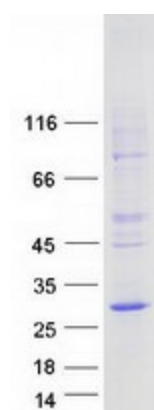
Synonyms: CLAST6

**Summary:** This gene encodes a transmembrane receptor that is associated with lysosomes. The encoded protein, also known as E3 protein, may play a role in hematopoiesis. [provided by RefSeq, Feb 2009]

**Protein Families:** Transmembrane

**Protein Pathways:** Lysosome

### Product images:



Coomassie blue staining of purified LPTM5 protein (Cat# [TP317813]). The protein was produced from HEK293T cells transfected with LPTM5 cDNA clone (Cat# [RC217813]) using MegaTran 2.0 (Cat# [TT210002]).