

## Product datasheet for **TP317807M**

### Cyclin Y (CCNY) (NM\_145012) Human Recombinant Protein

#### Product data:

Product Type:	Recombinant Proteins
Description:	Purified recombinant protein of Homo sapiens cyclin Y (CCNY), transcript variant 1, 100 µg
Species:	Human
Expression Host:	HEK293T
Expression cDNA Clone or AA Sequence:	>RC217807 representing NM_145012 <b>Red</b> =Cloning site <b>Green</b> =Tags(s)

MGNTTSCCVSSSPKLRRNAHSRLESYRPDLDLSREDTGCNLQHISDRENIDDLNMEFNPSDHPRASTIFL  
SKSQTDVREKRKSLFINHHPPGQIARKYSSCSTIFLDDSTVSQPNLKYTIKCVALAIYYHIKNRDPDGRM  
LLDIFDENLHPLSKSEVPPDYDKHNPEQKQIYRFVRTLFSAQAQLTAECAIVTLVYLERLLTYAEIDICPA  
NWKRIVLGAILLASKVWDDQAVWNVDYQCILKDITVEDMNELERQFLELLQFNINVPSSVYAKYYFDLRS  
LAEANNLSFPLEPLSRERAHKLEAISRLCEDKYKDLRRSARKRSASADNLTLPWSPAIS

**SGPTRRRLEQKLISEEDLAANDILDYKDDDDKV**

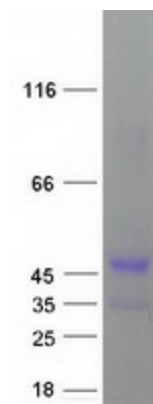
Tag:	C-Myc/DDK
Predicted MW:	39.2 kDa
Concentration:	>0.05 µg/µL as determined by microplate BCA method
Purity:	> 80% as determined by SDS-PAGE and Coomassie blue staining
Buffer:	25 mM Tris-HCl, 100 mM glycine, pH 7.3, 10% glycerol
Preparation:	Recombinant protein was captured through anti-DDK affinity column followed by conventional chromatography steps.
Note:	For testing in cell culture applications, please filter before use. Note that you may experience some loss of protein during the filtration process.
Storage:	Store at -80°C.
Stability:	Stable for 12 months from the date of receipt of the product under proper storage and handling conditions. Avoid repeated freeze-thaw cycles.
RefSeq:	<a href="#">NP_659449</a>
Locus ID:	219771



[View online »](#)

UniProt ID:	<a href="#">Q8ND76</a>
RefSeq Size:	2135
Cytogenetics:	10p11.21
RefSeq ORF:	1023
Synonyms:	C10orf9; CBCP1; CCNX; CFP1
Summary:	Cyclins, such as CCNY, control cell division cycles and regulate cyclin-dependent kinases (e.g., CDC2; MIM 116940) (Li et al., 2009 [PubMed 18060517]).[supplied by OMIM, May 2009]

### Product images:



Coomassie blue staining of purified CCNY protein (Cat# [TP317807]). The protein was produced from HEK293T cells transfected with CCNY cDNA clone (Cat# [RC217807]) using MegaTran 2.0 (Cat# [TT210002]).