

## Product datasheet for TP317792

### NAALADL1 (NM\_005468) Human Recombinant Protein

#### Product data:

Product Type:	Recombinant Proteins
Description:	Recombinant protein of human N-acetylated alpha-linked acidic dipeptidase-like 1 (NAALADL1), 20 µg
Species:	Human
Expression Host:	HEK293T
Expression cDNA Clone or AA Sequence:	>RC217792 representing NM_005468 Red=Cloning site Green=Tags(s)

MQWTKVLGLGLGAAALLGLGIILGHFAIPKKANSLAPQDLLEILETVMGQLDAHRIRENLRLESREPHL  
ASSPRDEDLVQLLLQRWKDPESGLDSAEASTYEVLLSFPSEQPNVVDIVGPTGGIIHSCHRTEENVVTGE  
QGGPDVWPYAAAYAPSGTPQGLLVYANRGAEEDFKELQQTQGIKLEGTIALTRYGGVGRGAKAVNAAKHGV  
AGVLVYTDPADINDGLSSPDETFPNSWYLPPSGVERGSSYYEYFGDPLTPYLPVAVPSSFRVDLANVSGFPP  
IPTQPIGFQDARDLLCNLNGTLAPATWQGALGCHYRLGPGFRPDGDFPADSQVNVSVYNRLELRNSSNVL  
GIIRGAVEPDRYVLYGNHRDSWVHGAVDPSSGTAVLLELSRVLGTLKKGTWRPRRSIVFASWGAEFGL  
IGSTEFTEEFFNKLQERTVAYINVDISVFANATLRVQGTTPVQSVVFSATKEIRSPGPGDLSIYDNWIRY  
FNRSSPVYGLVPSLGLGAGSDYAPFVHFLGISSMDIAYTYDRSKTSARIYPTYHTAFDFTFDYVDKFLDP  
GFSSHQAVARTAGSVILRLSDSFFLPLKVSVDYSETLRSFLQAAQQDLGALLEQHSISLGPLTAVEKFEA  
EAAALGQRISTLQKGSPPDPLQVRMLNDQLMLLERTFLNPRAFPEERYSHVLWAPRTGSVTFPGLSNAC  
SRARDTASGSEAWAEVQRQLSIVVTALEGAAATLRPVADL

TRTRPLEQKLISEEDLAANDILDYKDDDDKV

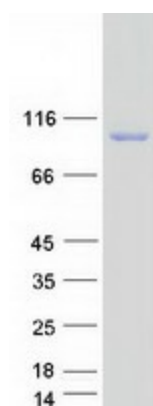
Tag:	C-Myc/DDK
Predicted MW:	80.4 kDa
Concentration:	>0.05 µg/µL as determined by microplate BCA method
Purity:	> 80% as determined by SDS-PAGE and Coomassie blue staining
Buffer:	25 mM Tris-HCl, 100 mM glycine, pH 7.3, 10% glycerol
Preparation:	Recombinant protein was captured through anti-DDK affinity column followed by conventional chromatography steps.
Note:	For testing in cell culture applications, please filter before use. Note that you may experience some loss of protein during the filtration process.



[View online »](#)

<b>Storage:</b>	Store at -80°C.
<b>Stability:</b>	Stable for 12 months from the date of receipt of the product under proper storage and handling conditions. Avoid repeated freeze-thaw cycles.
<b>RefSeq:</b>	<a href="#">NP_005459</a>
<b>Locus ID:</b>	10004
<b>UniProt ID:</b>	<a href="#">Q9UQQ1</a>
<b>RefSeq Size:</b>	2703
<b>Cytogenetics:</b>	11q13.1
<b>RefSeq ORF:</b>	2220
<b>Synonyms:</b>	I100; NAALADASEL
<b>Summary:</b>	Aminopeptidase with broad substrate specificity. Has lower activity with substrates that have Asp or Glu in the P2' position, or Pro in the P3' position. Lacks activity with substrates that have both Pro in the P3' position and Asp or Glu in the P2' position (PubMed:25752612). Lacks carboxypeptidase activity. Lacks dipeptidyl-peptidase IV type activity (PubMed:25752612). [UniProtKB/Swiss-Prot Function]
<b>Protein Families:</b>	Druggable Genome, Transmembrane

### Product images:



Coomassie blue staining of purified NAALADL1 protein (Cat# TP317792). The protein was produced from HEK293T cells transfected with NAALADL1 cDNA clone (Cat# [RC217792]) using MegaTran 2.0 (Cat# [TT210002]).