

Product datasheet for **TP317783L**

KBTBD12 (NM_207335) Human Recombinant Protein

Product data:

Product Type:	Recombinant Proteins
Description:	Recombinant protein of human kelch domain containing 6 (KLHDC6), 1 mg
Species:	Human
Expression Host:	HEK293T
Expression cDNA Clone or AA Sequence:	>RC217783 representing NM_207335 Red =Cloning site Green =Tags(s)

MECKIEGKEKYQHSLNLLNKIQNMKELAEMIDVWLTAEGEKFPCHRLVLAAFSPYFKAMFTCGLLECNQR
EVILYDITAESVSVLLNYMYNAALEINNANVQTVAMAAYFMQMEEVFSVCQKYMMDHMDASNCLGIYYFA
KQIGAEDLSDRSKKYLYQHFAEVSLHEEILEIEVHQFLTLIKSDDLNISREESILDLVLRWVNHKELRT
VHVELLKQVRLELVNPSFLRQALRRNTMLLCDADCVDIIQNAFKAIKTPQQHSLNLRYGMETTSLLLCI
GNNSSGIRSRHSYGDASFYDPVSRKTYFISSPKYGEGLGTVCTGVVMMENNTIIVAGEASAKLSRQKN
KNVEIYRYHDRGNQFWEKLTAEFRELYALGSIHNDLYVIGGQMKIKNQYLITNCVDKYSVERDNWKRVS
PLPLQLACHAVTVNKNLYVIGGWTPQMDLPDEEPPDRLSNKLQYDPSQDQWSVRAPMKYSKYRFSTAV
NSEIYVLGGIGCVGQDKGQVRKCLDWEIYNPDGDFWREGPPMPSPLLSLRTNSTNAGAVDGLKYVCGGF
HGADRHEVISKEILELDPWENQWNVAINVLMHDSYDVCLVARMNPRDLIPPPSDLVEEGNEH

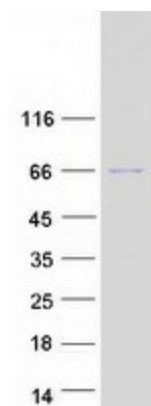
TRTRPLEQKLISEEDLAANDILDYKDDDDKV

Tag:	C-Myc/DDK
Predicted MW:	70.9 kDa
Concentration:	>0.05 µg/µL as determined by microplate BCA method
Purity:	> 80% as determined by SDS-PAGE and Coomassie blue staining
Buffer:	25 mM Tris-HCl, 100 mM glycine, pH 7.3, 10% glycerol
Preparation:	Recombinant protein was captured through anti-DDK affinity column followed by conventional chromatography steps.
Note:	For testing in cell culture applications, please filter before use. Note that you may experience some loss of protein during the filtration process.
Storage:	Store at -80°C.



[View online »](#)

Stability:	Stable for 12 months from the date of receipt of the product under proper storage and handling conditions. Avoid repeated freeze-thaw cycles.
RefSeq:	NP_997218
Locus ID:	166348
UniProt ID:	Q3ZCT8
RefSeq Size:	5268
Cytogenetics:	3q21.3
RefSeq ORF:	1869
Synonyms:	KLHDC6

Product images:

Coomassie blue staining of purified KBTBD12 protein (Cat# [TP317783]). The protein was produced from HEK293T cells transfected with KBTBD12 cDNA clone (Cat# [RC217783]) using MegaTran 2.0 (Cat# [TT210002]).