

## Product datasheet for TP317726

### PSG8 (NM\_182707) Human Recombinant Protein

#### Product data:

Product Type:	Recombinant Proteins
Description:	Purified recombinant protein of Homo sapiens pregnancy specific beta-1-glycoprotein 8 (PSG8), transcript variant 1, 20 µg
Species:	Human
Expression Host:	HEK293T
Expression cDNA Clone or AA Sequence:	>RC217726 representing NM_182707 Red=Cloning site Green=Tags(s)
	<p>MGLLSAPPCTQRITWKGLLLTASLLNFWNPPTTAQVTIEAQPTKVSEGKDVLLLVHNLQPQLTGYIWYKG QIRDLYHYITSYVVDGQIIYGPAYSGRETIYSNASLLIQNVTQEDAGSYTLHIIMGGDENRGVTHFTF TLYLETPKPSISSKLNPREAMEAVSLTCDPETPDASYLWWMNGQSLPMSHRLQLSETNRTLFLLVGVTKY TAGPYECEIRNPVSASRSDPFTLNLLPKLPKPYITINLLKPRENKDVLNFTCEPKSENYTIWWLNGQSL PVSPRVKRPIENRILILPSVTRNETGPYQCEIRDQYGGIRSYVTLNVLYGPDLPRIYPSFTYYRSGEVL YLSCSADSNPPAQYSWTINGKFQLSGQKLFIPQITTKHSGLYACSVRNSATGKESSKSMTVKVSGKRIPV SLAIGI</p> <p>TRTRPLEQKLISEEDLAANDILDYKDDDDKV</p>
Tag:	C-Myc/DDK
Predicted MW:	47.6 kDa
Concentration:	>0.05 µg/µL as determined by microplate BCA method
Purity:	> 80% as determined by SDS-PAGE and Coomassie blue staining
Buffer:	25 mM Tris-HCl, 100 mM glycine, pH 7.3, 10% glycerol
Preparation:	Recombinant protein was captured through anti-DDK affinity column followed by conventional chromatography steps.
Note:	For testing in cell culture applications, please filter before use. Note that you may experience some loss of protein during the filtration process.
Storage:	Store at -80°C.
Stability:	Stable for 12 months from the date of receipt of the product under proper storage and handling conditions. Avoid repeated freeze-thaw cycles.



[View online »](#)

RefSeq: [NP\\_874366](#)

Locus ID: 440533

UniProt ID: [Q9UQ74](#)

RefSeq Size: 1281

Cytogenetics: 19q13.2

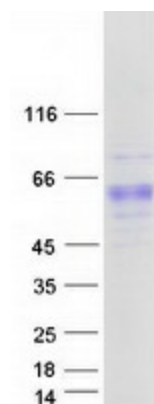
RefSeq ORF: 1278

Synonyms: PSG1

**Summary:** The human pregnancy-specific glycoproteins (PSGs) are a group of molecules that are mainly produced by the placental syncytiotrophoblasts during pregnancy. PSGs comprise a subgroup of the carcinoembryonic antigen (CEA) family, which belongs to the immunoglobulin superfamily. For additional general information about the PSG gene family, see PSG1 (MIM 176390).[supplied by OMIM, Oct 2009]

**Protein Families:** Secreted Protein

### Product images:



Coomassie blue staining of purified PSG8 protein (Cat# TP317726). The protein was produced from HEK293T cells transfected with PSG8 cDNA clone (Cat# [RC217726]) using MegaTran 2.0 (Cat# [TT210002]).