

Product datasheet for **TP317707**

SSH3BP1 (ABI1) (NM_005470) Human Recombinant Protein

Product data:

Product Type: Recombinant Proteins

Description: Recombinant protein of human abl-interactor 1 (ABI1), transcript variant 1, 20 µg

Species: Human

Expression Host: HEK293T

Expression cDNA Clone or AA Sequence: >RC217707 representing NM_005470

Red=Cloning site **Green**=Tags(s)

MAELQMLLEEEIPSGKRALIESYQNLTRVADYCENNYIQATDKRKALEETKAYTTQSLASVAYQINALAN
NVLQLLDIQASQLRRMESSINHISQTVDIHKEKVARREIGILTNNKNTSRTHKIIAPANMERPVRYIRKP
IDYTVLDDVGHGVKWLKAKHGNNQPARTGTLRSTNPPTQKPPSPMSGRGTLGRNTPYKLEPVKPTVP
NDYMTSPARLGSQHSPGRASLNQRPRTHSGSSGGSGSRENSGSSSIGIPIAVPTSPPTIGPAPGSAPG
SQYGTMTQRQISRHNSTTSSTSSGGYRRTPSVTAQFSAQPHVNGGPLYQNSIADSPTPPPPPDDIPMF
DDSPPPPPPPVDYEDEEAQVQYNDPYADGDPAWAPKNYIEKVVAIYDYTKDKDDELFSMEGAIIVIK
KNDDGWYEGVCNRVTGLFPGNYVESIMHYTD

TRTRPLEQKLISEEDLAANDILDYKDDDDKV

Tag: C-Myc/DDK

Predicted MW: 54.9 kDa

Concentration: >0.05 µg/µL as determined by microplate BCA method

Purity: > 80% as determined by SDS-PAGE and Coomassie blue staining

Buffer: 25 mM Tris-HCl, 100 mM glycine, pH 7.3, 10% glycerol

Preparation: Recombinant protein was captured through anti-DDK affinity column followed by conventional chromatography steps.

Note: For testing in cell culture applications, please filter before use. Note that you may experience some loss of protein during the filtration process.

Storage: Store at -80°C.

Stability: Stable for 12 months from the date of receipt of the product under proper storage and handling conditions. Avoid repeated freeze-thaw cycles.

RefSeq: [NP_005461](#)

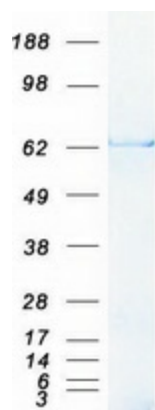


[View online »](#)

Locus ID:	10006
UniProt ID:	Q8IZP0
RefSeq Size:	3725
Cytogenetics:	10p12.1
RefSeq ORF:	1524
Synonyms:	ABI-1; ABLBP4; E3B1; NAP1BP; SSH3BP; SSH3BP1

Summary: This gene encodes a member of the Abelson-interactor family of adaptor proteins. These proteins facilitate signal transduction as components of several multiprotein complexes, and regulate actin polymerization and cytoskeletal remodeling through interactions with Abelson tyrosine kinases. The encoded protein plays a role in macropinocytosis as a component of the WAVE2 complex, and also forms a complex with EPS8 and SOS1 that mediates signal transduction from Ras to Rac. This gene may play a role in the progression of several malignancies including melanoma, colon cancer and breast cancer, and a t(10;11) chromosomal translocation involving this gene and the MLL gene has been associated with acute myeloid leukemia. Alternatively spliced transcript variants encoding multiple isoforms have been observed for this gene, and a pseudogene of this gene is located on the long arm of chromosome 14. [provided by RefSeq, Sep 2011]

Product images:



Coomassie blue staining of purified ABI1 protein (Cat# TP317707). The protein was produced from HEK293T cells transfected with ABI1 cDNA clone (Cat# [RC217707]) using MegaTran 2.0 (Cat# [TT210002]).