

## Product datasheet for TP317702

### PKC epsilon (PRKCE) (NM\_005400) Human Recombinant Protein

#### Product data:

Product Type:	Recombinant Proteins
Description:	Recombinant protein of human protein kinase C, epsilon (PRKCE), 20 µg
Species:	Human
Expression Host:	HEK293T
Expression cDNA	>RC217702 representing NM_005400
Clone or AA Sequence:	Red=Cloning site Green=Tags(s)

MVVFNGLLKIKICEAVSLKPTAWSLRHAVGPRPQTFLDPYIALNVDDSRIGQTATKQKTNSPAWHDEFV  
TDVCNGRKIELAVFHDAPIGYDDFVANCTIQFEELLQNGSRHFEDWIDLEPEGRVYVIIDLSGSSGEAPK  
DNEERVFRERMRPRKRQGAVRRRVHQVNGHKFMATYLRQPTYCSHCRDFIWGVIGKQGYQCQVCTCVWHK  
RCHELIITKCAGLKKQETPDQVGSQRFSVNMMPHKFGIHNYKVPTFCDHCGSLLWGLLRQGLQCKVCKMNV  
HRRCETNVAPNCGVDARGIAKVLADLGVTPDKITNSGQRRKLIAGAESPQPASGSSPSEEDRSKSAPTS  
PCDQEIKELENNIRKALSFDNRGEEHRAASSPDGQLMSPGENGEVRQGQAKRLGLDEFNFIKVLGKGSFG  
KVMLAELKKGKDEVYAVKVLKDDVILQDDDDVDTMTEKRILALARKHPYLTQLYCCFQTKDRLFFVMEYVN  
GGDLMFQIQRSRKFDEPRSRFYAAEVTSALMFLHQHGVYIRDLLKLDNILLDAEGHCKLADFGMCKEGILN  
GVTTTTFCGTPDYIAPEILQELEYGPSVDWWALGVLMYEMMAGQPPFEADNEDDLFESILHDDVLYPVWL  
SKEAVSILKAFMTKNPHKRLGCVASQNGEDAIAKQHPFFKEIDWVLLLEQKKIKPPFKPRIKTRDNNFDQ  
DFTREPVLTLDVAIVKQINQEEFKGFSYFGEDLMP

TRTRPLEQKLISEEDLAANDILDYKDDDDKV

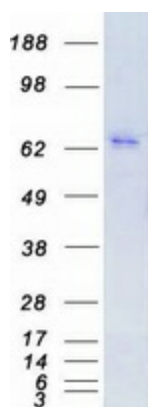
Tag:	C-Myc/DDK
Predicted MW:	83.5 kDa
Concentration:	>0.05 µg/µL as determined by microplate BCA method
Purity:	> 80% as determined by SDS-PAGE and Coomassie blue staining
Buffer:	25 mM Tris-HCl, 100 mM glycine, pH 7.3, 10% glycerol
Preparation:	Recombinant protein was captured through anti-DDK affinity column followed by conventional chromatography steps.
Note:	For testing in cell culture applications, please filter before use. Note that you may experience some loss of protein during the filtration process.
Storage:	Store at -80°C.



[View online »](#)

<b>Stability:</b>	Stable for 12 months from the date of receipt of the product under proper storage and handling conditions. Avoid repeated freeze-thaw cycles.
<b>RefSeq:</b>	<a href="#">NP_005391</a>
<b>Locus ID:</b>	5581
<b>UniProt ID:</b>	<a href="#">Q02156</a> , <a href="#">L7RTI5</a>
<b>RefSeq Size:</b>	5537
<b>Cytogenetics:</b>	2p21
<b>RefSeq ORF:</b>	2211
<b>Synonyms:</b>	nPKC-epsilon; PKCE
<b>Summary:</b>	Protein kinase C (PKC) is a family of serine- and threonine-specific protein kinases that can be activated by calcium and the second messenger diacylglycerol. PKC family members phosphorylate a wide variety of protein targets and are known to be involved in diverse cellular signaling pathways. PKC family members also serve as major receptors for phorbol esters, a class of tumor promoters. Each member of the PKC family has a specific expression profile and is believed to play a distinct role in cells. The protein encoded by this gene is one of the PKC family members. This kinase has been shown to be involved in many different cellular functions, such as neuron channel activation, apoptosis, cardioprotection from ischemia, heat shock response, as well as insulin exocytosis. Knockout studies in mice suggest that this kinase is important for lipopolysaccharide (LPS)-mediated signaling in activated macrophages and may also play a role in controlling anxiety-like behavior. [provided by RefSeq, Jul 2008]
<b>Protein Families:</b>	Druggable Genome, Protein Kinase
<b>Protein Pathways:</b>	Fc epsilon RI signaling pathway, Fc gamma R-mediated phagocytosis, Tight junction, Type II diabetes mellitus, Vascular smooth muscle contraction

### Product images:



Coomassie blue staining of purified PRKCE protein (Cat# TP317702). The protein was produced from HEK293T cells transfected with PRKCE cDNA clone (Cat# [RC217702]) using MegaTran 2.0 (Cat# [TT210002]).