

Product datasheet for **TP317701M**

SYTL2 (NM_206929) Human Recombinant Protein

Product data:

Product Type:	Recombinant Proteins
Description:	Recombinant protein of human synaptotagmin-like 2 (SYTL2), transcript variant e, 100 µg
Species:	Human
Expression Host:	HEK293T
Expression cDNA Clone or AA Sequence:	>RC217701 representing NM_206929 Red =Cloning site Green =Tags(s)
	 MSKSVPAFLQDESDDRETDTASESSYQLSRHKKSPSSLTNLSSSSGMTSLSSVSGSVMSVYSGDFGNLEV KGNIQFAIEYVESLKELVFVAQCKDLAAADVKKQRSDPYVKAYLLPDKGKMGKKKTLVKKTLNVPVYNE ILRYKIEKQILKTQKLNLSIWHRDTFKRNSFLGEVELDLETWDWDNKQNKQLRWYPLKRKTAPVALEAEN RGEMKLALQYVPEPVPGKKLPTTGEVHIWVKECLDPLLRGSHLNSFVKCTILPDTSRKSRQKTRAVGKT TNPIFNHTMYYDGRPEDLMEACVELTWDHYKLTNQFLGGLRIGFGTGKSYGTEVDWMDSTSEEVALWE KMNPSNTWIEATLPLRMILLIAKISK TRTRPLEQKLISEEDLAANDILDYKDDDDKV
Tag:	C-Myc/DDK
Predicted MW:	42.6 kDa
Concentration:	>0.05 µg/µL as determined by microplate BCA method
Purity:	> 80% as determined by SDS-PAGE and Coomassie blue staining
Buffer:	25 mM Tris-HCl, 100 mM glycine, pH 7.3, 10% glycerol
Preparation:	Recombinant protein was captured through anti-DDK affinity column followed by conventional chromatography steps.
Note:	For testing in cell culture applications, please filter before use. Note that you may experience some loss of protein during the filtration process.
Storage:	Store at -80°C.
Stability:	Stable for 12 months from the date of receipt of the product under proper storage and handling conditions. Avoid repeated freeze-thaw cycles.
RefSeq:	<u>NP_996812</u>
Locus ID:	54843

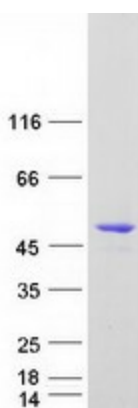


[View online »](#)

UniProt ID: [Q9HCH5](#)
RefSeq Size: 2447
Cytogenetics: 11q14.1
RefSeq ORF: 1128
Synonyms: CHR11SYT; EXO4; PPP1R151; SGA72M; SLP2; SLP2A

Summary: The protein encoded by this gene is a synaptotagmin-like protein (SLP) that belongs to a C2 domain-containing protein family. The SLP homology domain (SHD) of this protein has been shown to specifically bind the GTP-bound form of Ras-related protein Rab-27A (RAB27A). This protein plays a role in RAB27A-dependent vesicle trafficking and controls melanosome distribution in the cell periphery. Alternative splicing results in multiple transcript variants encoding distinct isoforms.[provided by RefSeq, Jun 2009]

Product images:



Coomassie blue staining of purified SYTL2 protein (Cat# [TP317701]). The protein was produced from HEK293T cells transfected with SYTL2 cDNA clone (Cat# [RC217701]) using MegaTran 2.0 (Cat# [TT210002]).