

Product datasheet for **TP317673L**

RNPS1 (NM_006711) Human Recombinant Protein

Product data:

Product Type: Recombinant Proteins

Description: Recombinant protein of human RNA binding protein S1, serine-rich domain (RNPS1), transcript variant 1, 1 mg

Species: Human

Expression Host: HEK293T

Expression cDNA Clone or AA Sequence: >RC217673 representing NM_006711
Red=Cloning site **Green**=Tags(s)

MDLSGVKKKSLGKVENNKKSSSTRAPSPTRKDRSDEKSKDRSKDKGATKESSEKDRGRDKTRKRRSASS
GSSSTRSRSSSTSSSGSSTSTGSSSSGSSSSASSRSGSSSTRSSSSSSSSGSPSPRRRHDRRRRSRK
SKPPKRDEKERKRRSPSPKPTKVHIGRLTRNVTKDHIMEIFSTYGKIKMIDMPVERMHPHLSKGYAYVEF
ENPDEAEKALKHMDGGQIDGQEITATAVLAPWPRPPRRFSPRRMLPPPPMWRSPPRMRRRSRSPRRR
SPVRRRSRSPGRRRHRSRSSNSR

TRTRPLEQKLISEEDLAANDILDYKDDDDKV

Tag: C-Myc/DDK

Predicted MW: 34 kDa

Concentration: >0.05 µg/µL as determined by microplate BCA method

Purity: > 80% as determined by SDS-PAGE and Coomassie blue staining

Buffer: 25 mM Tris-HCl, 100 mM glycine, pH 7.3, 10% glycerol

Preparation: Recombinant protein was captured through anti-DDK affinity column followed by conventional chromatography steps.

Note: For testing in cell culture applications, please filter before use. Note that you may experience some loss of protein during the filtration process.

Storage: Store at -80°C.

Stability: Stable for 12 months from the date of receipt of the product under proper storage and handling conditions. Avoid repeated freeze-thaw cycles.

RefSeq: [NP_006702](#)

Locus ID: 10921



[View online »](#)

UniProt ID: [Q15287](#), [D3DU92](#)

RefSeq Size: 2038

Cytogenetics: 16p13.3

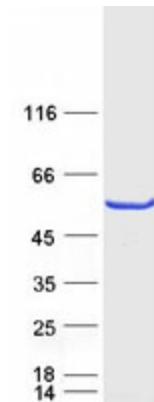
RefSeq ORF: 915

Synonyms: E5.1

Summary: This gene encodes a protein that is part of a post-splicing multiprotein complex involved in both mRNA nuclear export and mRNA surveillance. mRNA surveillance detects exported mRNAs with truncated open reading frames and initiates nonsense-mediated mRNA decay (NMD). When translation ends upstream from the last exon-exon junction, this triggers NMD to degrade mRNAs containing premature stop codons. This protein binds to the mRNA and remains bound after nuclear export, acting as a nucleocytoplasmic shuttling protein. This protein contains many serine residues. Several transcript variants encoding different isoforms have been found for this gene. [provided by RefSeq, Nov 2013]

Protein Families: Transcription Factors

Product images:



Coomassie blue staining of purified RNPS1 protein (Cat# [TP317673]). The protein was produced from HEK293T cells transfected with RNPS1 cDNA clone (Cat# [RC217673]) using MegaTran 2.0 (Cat# [TT210002]).