

## Product datasheet for **TP317672L**

### CCL14 (NM\_004166) Human Recombinant Protein

#### Product data:

Product Type:	Recombinant Proteins
Description:	Recombinant protein of human chemokine (C-C motif) ligand 14 (CCL14), transcript variant 1, 1 mg
Species:	Human
Expression Host:	HEK293T
Expression cDNA Clone or AA Sequence:	>RC217672 representing NM_004166 <b>Red</b> =Cloning site <b>Green</b> =Tags(s)

MKISVAAIPFFLLITIALGKTTESSSRGPYHPSECCFTYTTYKIPRQRIMDYETNSQCSKPGIVFITKR  
GHSVCTNPSDKWVQDYIKDMKEN

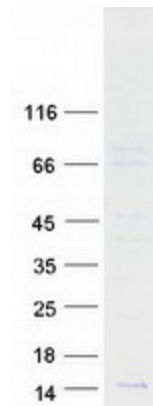
**TRTRPLEQKLISEEDLAANDILDYKDDDDKV**

Tag:	C-Myc/DDK
Predicted MW:	8.6 kDa
Concentration:	>0.05 µg/µL as determined by microplate BCA method
Purity:	> 80% as determined by SDS-PAGE and Coomassie blue staining
Buffer:	25 mM Tris-HCl, 100 mM glycine, pH 7.3, 10% glycerol
Preparation:	Recombinant protein was captured through anti-DDK affinity column followed by conventional chromatography steps.
Note:	For testing in cell culture applications, please filter before use. Note that you may experience some loss of protein during the filtration process.
Storage:	Store at -80°C.
Stability:	Stable for 12 months from the date of receipt of the product under proper storage and handling conditions. Avoid repeated freeze-thaw cycles.
RefSeq:	<a href="#">NP_004157</a>
Locus ID:	6358
UniProt ID:	<a href="#">Q16627</a>
RefSeq Size:	1344



[View online »](#)

<b>Cytogenetics:</b>	17q12
<b>RefSeq ORF:</b>	279
<b>Synonyms:</b>	CC-1; CC-3; CKb1; FLJ16015; HCC-1; HCC-3; MCIF; NCC-2; NCC2; SCYA14; SCYL2; SY14
<b>Summary:</b>	This gene, chemokine (C-C motif) ligand 14, is one of several CC cytokine genes clustered on 17q11.2. The CC cytokines are secreted proteins characterized by two adjacent cysteines. The cytokine encoded by this gene induces changes in intracellular calcium concentration and enzyme release in monocytes. Multiple transcript variants encoding different isoforms have been found for this gene. Read-through transcripts are also expressed that include exons from the upstream cytokine gene, chemokine (C-C motif) ligand 15, and are represented as GenID: 348249. [provided by RefSeq, Dec 2009]
<b>Protein Families:</b>	Druggable Genome, Secreted Protein
<b>Protein Pathways:</b>	Chemokine signaling pathway, Cytokine-cytokine receptor interaction

**Product images:**

Coomassie blue staining of purified CCL14 protein (Cat# [TP317672]). The protein was produced from HEK293T cells transfected with CCL14 cDNA clone (Cat# [RC217672]) using MegaTran 2.0 (Cat# [TT210002]).