

## Product datasheet for TP317652L

### CARD10 (NM\_014550) Human Recombinant Protein

#### Product data:

Product Type:	Recombinant Proteins
Description:	Recombinant protein of human caspase recruitment domain family, member 10 (CARD10), 1 mg
Species:	Human
Expression Host:	HEK293T
Expression cDNA Clone or AA Sequence:	>RC217652 representing NM_014550 Red=Cloning site Green=Tags(s)

MPGRAEAGEAEEEEAGAGSGSEAEEDALWERIEGVRHRLARALNPAKLTPYLRQCRVIDEQDEEEVLSTYR  
FPCRVNRTGRLMDILRCRGKRGYEAFLAELFYYPEHFTLLTGQEPARCSMILDEEGPEGLTQFLMTEV  
RRLREARKSQLQREQQLQARGRVLEEERAGLEQRLRDQQQAQERCQRLREDWEAGSLELLRLKDENYMIA  
MRLAQLSEEKNSAVLRSRDLQLAVDQLKLVSRLEECCALLRRARGPPPGAAEEKEKEKEKEKEPDNDLV  
SELRAENQRLTASLRELQEGLLQEQASRPGAPGSERILLDILEHDWREAQDSRQELCQKLHAVQGELQWAE  
ELRDQYLQEMEDLRLKHRTLQKDCDLYKHRMATVLAQLEIEKERDQAIQSRDRIQLQYSQSLIEKDQYR  
KQVRGLEAERDELLTTLTSLEGTKALLEVQLQRAQGGTCLKACASSHSLCSNLSSTWSLSEFPSPPLGGPE  
ATGEAAVMGGPEPHNSEEATDSEKEINRLSILPFPPSAGSILRRQREEDPAPPKRSFSSMSDITGSVTLK  
PWSPGLSSSSSSDSVWPLGKPEGLLARGCGLDFLNRSLAIRVSGRSPPGGPEPQDKGPDGLSFYGDWRWSG  
AVRRVLSGPGSARMEPREQRVEAAGLEGACLEAEAQQRTLLWNQGSTLPSLMDSKACQSFHEALEAWAK  
GPGAEPFYIRANLTLPERADPHALCVKAQEILRLVDSAYKRRQEWFCRVDPLTLRDLDRGTVPNYQRAQ  
QLLEVQEKCLPSSRHGRPRSNLKKRALDQLRLVRPKVPGAPAGDSPDQLLEPCAEPERSLRPYSVLRPL  
LVSALRPVLLPECLAPRLIRNLLDLPSSRLDFQVCPAESLSGEELCPSSAPGAPKAQPATPGLGSRIRA  
IQESVGKKHCLELGLARGVRELVQNEIYPIVHVVEVTEKNVREVRGLLGRPGWRDSELLRQCRGSEQVLR  
GLPCSWVQVPAHEWGHAEELAKVVRGRILQEQRALVWVECGSSRGCPSSSEA

TRTRPLEQKLISEEDLAANDILDYKDDDDKV

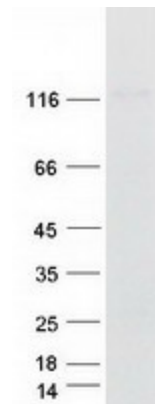
Tag:	C-Myc/DDK
Predicted MW:	115.8 kDa
Concentration:	>0.05 µg/µL as determined by microplate BCA method
Purity:	> 80% as determined by SDS-PAGE and Coomassie blue staining
Buffer:	25 mM Tris-HCl, 100 mM glycine, pH 7.3, 10% glycerol



[View online »](#)

<b>Preparation:</b>	Recombinant protein was captured through anti-DDK affinity column followed by conventional chromatography steps.
<b>Note:</b>	For testing in cell culture applications, please filter before use. Note that you may experience some loss of protein during the filtration process.
<b>Storage:</b>	Store at -80°C.
<b>Stability:</b>	Stable for 12 months from the date of receipt of the product under proper storage and handling conditions. Avoid repeated freeze-thaw cycles.
<b>RefSeq:</b>	<a href="#">NP_055365</a>
<b>Locus ID:</b>	29775
<b>UniProt ID:</b>	<a href="#">Q9BWT7</a>
<b>RefSeq Size:</b>	3912
<b>Cytogenetics:</b>	22q13.1
<b>RefSeq ORF:</b>	3096
<b>Synonyms:</b>	BIMP1; CARMA3
<b>Summary:</b>	The caspase recruitment domain (CARD) is a protein module that consists of 6 or 7 antiparallel alpha helices. It participates in apoptosis signaling through highly specific protein-protein homophilic interactions. Like several other CARD proteins, CARD10 belongs to the membrane-associated guanylate kinase (MAGUK) family and activates NF-kappa-B (NFKB; see MIM 164011) through BCL10 (MIM 603517) (Wang et al., 2001 [PubMed 11259443]).[supplied by OMIM, Mar 2008]

### Product images:



Coomassie blue staining of purified CARD10 protein (Cat# [TP317652]). The protein was produced from HEK293T cells transfected with CARD10 cDNA clone (Cat# [RC217652]) using MegaTran 2.0 (Cat# [TT210002]).