

## Product datasheet for TP317637

### Ataxin 2 like (ATXN2L) (NM\_148414) Human Recombinant Protein

#### Product data:

**Product Type:** Recombinant Proteins  
**Description:** Recombinant protein of human ataxin 2-like (ATXN2L), transcript variant C, 20 µg  
**Species:** Human  
**Expression Host:** HEK293T  
**Expression cDNA Clone or AA Sequence:** >RC217637 representing NM\_148414  
Red=Cloning site Green=Tags(s)

MLKPQPLQQPSQPQQPPPTQQAVARRPPGGTSPNGGLPGPLATSAAPPGPPAAASPCLGPVAAAGSGLR  
 RGAEGILAPQPPPPQQHQERPAAAIGSARGQSTGKGGPPQSPVFEGVYNNRMLHFLTAVVGSTCDVKVK  
 NGTTYEGIFKTLSSKFELAVDAVHRKASEPAGGPRREDIVDTMVFKPSDVMLVHFRNVDFNYATKDKFTD  
 SAIAMNSKVNGEHKEKVLQRWEGGDSNSDDYDLESDMSNGWDPNEMFKFNEENYGVKTTYDSSLSSYTVP  
 LEKDNSEEFQRRELRAAQLAREIESSPQYRLRIAMENDDGRTEEEKHSAVQRQSGGRESPLASREGKYI  
 PLPQVRVREGPRGGVRCSSSRGGRPGLSSLPPRGPHHLDNSSPGGSEARGINGGSPRMSPKAQRPLRGAK  
 TLSSPSNRPSGETSVPPPPAVGRMYPPRSPKSAAPAPISASCPEPPIGSAVPTSSASIPVTSSVSDPGVG  
 SISPASPKISLAPTDVKELSTKEPGRTELEPQELARIAGKVPGLQNEQKRFQLEELRKFQAQFKLQPPSSP  
 ENSLDPFPPRILKEEPKGKEKEVDGLLTSEPMGSPVSSKTESVSDKEDKPLAPSGGTEGPEQPPPPCPS  
 QTGSPPVGLIKGEDKDEGPVAEQVKKSTLNPNAKEFNPTKPLLSVNKSTSTPTSPGPRTHSTPSIPVLTA  
 GQSGLYSPQYISYIPQIHMGPAVQAPQMYPYPVNSVPGQQGKYRGAKGSLPPQRSDQHQPASAPMMQA  
 AAAAGPPLVAATPYSSYIPYNPQQFPGQPAMMQPMAHYPSQPVFAPMLQSNPRMLTSGSHPQAISSSTP  
 QYPSAEQPTQALYATVHQSYPHHATQLHAHQPPATTPTGSQPQSQAHAAPSPVQHQAQAPHLGSGQPQ  
 QNLYHPGALTGTSSLPPGSAQSPQSSFPQAAVYAIHHQLPHGFTNMAHVTAHVQTGITAAPPPHP  
 GAPHPQVMLLHPPQSHGGPPQGAVPQSGVPALSASTPSYPYIGHPPQGEQPGQAPGFPGGADDRILCRV  
 GRSHSRRRQGLAPGSVLCFPPSSLSCDPAAPLPTASPALSDPDCLLT

TRTRPLEQKLISEEDLAANDILDYKDDDDKV

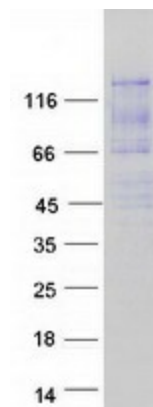
**Tag:** C-Myc/DDK  
**Predicted MW:** 115.4 kDa  
**Concentration:** >0.05 µg/µL as determined by microplate BCA method  
**Purity:** > 80% as determined by SDS-PAGE and Coomassie blue staining  
**Buffer:** 25 mM Tris-HCl, 100 mM glycine, pH 7.3, 10% glycerol



[View online »](#)

|                      |  |
|----------------------|--|
| <b>Preparation:</b>  | Recombinant protein was captured through anti-DDK affinity column followed by conventional chromatography steps.   |
| <b>Note:</b>         | For testing in cell culture applications, please filter before use. Note that you may experience some loss of protein during the filtration process.   |
| <b>Storage:</b>      | Store at -80°C.  |
| <b>Stability:</b>    | Stable for 12 months from the date of receipt of the product under proper storage and handling conditions. Avoid repeated freeze-thaw cycles.  |
| <b>RefSeq:</b>       | <u><a href="#">NP_680780</a></u>   |
| <b>Locus ID:</b>     | 11273  |
| <b>UniProt ID:</b>   | <u><a href="#">Q8WWM7</a></u>  |
| <b>RefSeq Size:</b>  | 4000   |
| <b>Cytogenetics:</b> | 16p11.2  |
| <b>RefSeq ORF:</b>   | 3291   |
| <b>Synonyms:</b>     | A2D; A2LG; A2LP; A2RP  |
| <b>Summary:</b>      | This gene encodes an ataxin type 2 related protein of unknown function. This protein is a member of the spinocerebellar ataxia (SCAs) family, which is associated with a complex group of neurodegenerative disorders. Several alternatively spliced transcripts encoding different isoforms have been found for this gene. [provided by RefSeq, Jul 2008] |

### Product images:



Coomassie blue staining of purified ATXN2L protein (Cat# TP317637). The protein was produced from HEK293T cells transfected with ATXN2L cDNA clone (Cat# [RC217637]) using MegaTran 2.0 (Cat# [TT210002]).