

Product datasheet for TP317628

ARHGEF37 (NM_001001669) Human Recombinant Protein

Product data:

Product Type:	Recombinant Proteins
Description:	Recombinant protein of human FLJ41603 protein (FLJ41603), 20 µg
Species:	Human
Expression Host:	HEK293T
Expression cDNA Clone or AA Sequence:	>RC217628 representing NM_001001669 Red=Cloning site Green=Tags(s)

MAKHGADEPSSRSGSPDREGRASEDRSLLHQRLAVRELIDTEVSYLHMLQLCASDIRSRLQQLPQGDLVDV
LFSNIDDIKVNRSRFLHDLQETASKEEEQVQLVGNIFLEFQEELEQVYKVYCASYDQALLLVDTYRKEPE
LQRHIQGIVEAVVPQAGSSGLSFLVIPLQRITRYPLLLQKILENTVPDASAYPVLQRAVSALQDVNTNI
NEYKMRKEVASKYTKVEQLTLRERLARINTHTLSKKTTRLSQLLKQEAGLIPRTEDKEFDDLEERFQWVS
LCVTELKNNVAAYLDNLQAFLYFRPHEYNLDIPEGPAVQYCNLARDLHLEAFKFKQRLEGLVWQPLCSL
AKALLGPQNLIKKRLDKLLDFERVEEKLEVGSVTYQEEAARHTYQALNSLLVAELPQFNQLVMQWLGGQI
MCTFVTLQRDLAKQVLQRAEGSMAQLPHHHVPEPAFRKLVEDALGRTSNQLRSFQETFEKVQPPPTTQPL
LPGSERQVQALLSRYGPGKLYQVTSNISGTGTLDTLPRGQIVAILQNKDTKGNSGRWLVDTGGHRGYVP
AGKLQLYHVPSAEELRRQAGLNKDPRLTPEPSPALVPSIPTMNQVIAAYPFVARSSHEVSLQAGQPVT
ILEAQDKKGNPEWSLVEVNGQRGYVPSGFLARARSPVLWGWSLPS

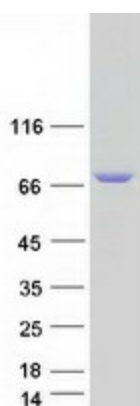
TRTRPLEQKLISEEDLAANDILDYKDDDDKV

Tag:	C-Myc/DDK
Predicted MW:	76.1 kDa
Concentration:	>0.05 µg/µL as determined by microplate BCA method
Purity:	> 80% as determined by SDS-PAGE and Coomassie blue staining
Buffer:	25 mM Tris-HCl, 100 mM glycine, pH 7.3, 10% glycerol
Preparation:	Recombinant protein was captured through anti-DDK affinity column followed by conventional chromatography steps.
Note:	For testing in cell culture applications, please filter before use. Note that you may experience some loss of protein during the filtration process.
Storage:	Store at -80°C.



[View online »](#)

Stability:	Stable for 12 months from the date of receipt of the product under proper storage and handling conditions. Avoid repeated freeze-thaw cycles.
RefSeq:	<u>NP_001001669</u>
Locus ID:	389337
UniProt ID:	<u>A1IGU5</u>
RefSeq Size:	4865
Cytogenetics:	5q32
RefSeq ORF:	2025
Summary:	May act as a guanine nucleotide exchange factor (GEF).[UniProtKB/Swiss-Prot Function]

Product images:

Coomassie blue staining of purified ARHGEF37 protein (Cat# TP317628). The protein was produced from HEK293T cells transfected with ARHGEF37 cDNA clone (Cat# [RC217628]) using MegaTran 2.0 (Cat# [TT210002]).