

Product datasheet for TP317608L

Germinal Center Kinase (MAP4K2) (NM_004579) Human Recombinant Protein

Product data:

Product Type:	Recombinant Proteins
Description:	Recombinant protein of human mitogen-activated protein kinase kinase kinase kinase 2 (MAP4K2), 1 mg
Species:	Human
Expression Host:	HEK293T
Expression cDNA Clone or AA Sequence:	>RC217608 representing NM_004579 Red=Cloning site Green=Tags(s)

MALLRDVSLQDPRDRFELLQRVGAGTYGDVYKARDTVTSELAALKVIVKLDPGDDISSLQQEITILRECRH
PNVVAYIGSYLRNDRWLWICMEFCGGGSLQEYHATGPLEERQIAYVCREALKGLHHLHSQGKIHRDIKGA
NLLLTQGDVKLADFGVSGELTASVAKRRSFIGTPYWMapevaaverkGGYNELCDVWALGITAIELGEL
QPPLFHLHPMRALMLMSKSSFQPPKLRDKTRWTQNFHHFLKALTKNPKKRPTAEKLLQHPFTTQQLPRA
LLTQLLDKASDPHLGTPSPEDCELETYDMFPDTIHSRQHGPAERTPSEIQFHQVKFGAPRRKETDPLNE
PWEEEWTLGKEELSGSLLQSVQEALERSLTIRSAEFQELDSPDDTMGTIKRAPFLGPLPTDPPAEEP
LSSPPGTLPPPPSGPNSSPLLPTAWATMKQREDPERSSCHGLPPTPKVHMGACFSKVFNGCPLRIHAAVT
WIHPVTRDQFLVGAEEGIYTLNLHELHEDTLEKLISHRCSWLYCVNNVLLSLSGKSTHIWAHDLPLGLFE
QRRLQQVPLSIPTNRLTQRIIPRRFALSTKIPDTKGCLQCRVVRNPYTGATFLAALPTSLLLLQWYEP
LQKFLLLKNFSSPLPSPAGMLEPLVLDGKELPQVCVGAEGPEGPGCRVLFHVLPLEAGLTPDILIPPEGI
PGSAQQVIQVDRDTILVSFERCVRIVNMQGEPTATLAPELTFDFPIETVVCLQDSVLAFWSHGMQGRSLD
TNEVTQEITDETRIFRVLGAHRDIILESIPDNPEAHSNLYILTGHQSTY

TRTRPLEQKLISEEDLAANDILDYKDDDDKV

Tag:	C-Myc/DDK
Predicted MW:	91.4 kDa
Concentration:	>0.05 µg/µL as determined by microplate BCA method
Purity:	> 80% as determined by SDS-PAGE and Coomassie blue staining
Buffer:	25 mM Tris-HCl, 100 mM glycine, pH 7.3, 10% glycerol
Preparation:	Recombinant protein was captured through anti-DDK affinity column followed by conventional chromatography steps.



[View online »](#)

Note: For testing in cell culture applications, please filter before use. Note that you may experience some loss of protein during the filtration process.

Storage: Store at -80°C.

Stability: Stable for 12 months from the date of receipt of the product under proper storage and handling conditions. Avoid repeated freeze-thaw cycles.

RefSeq: [NP_004570](#)

Locus ID: 5871

UniProt ID: [Q12851](#), [A0A024R567](#)

RefSeq Size: 2964

Cytogenetics: 11q13.1

RefSeq ORF: 2460

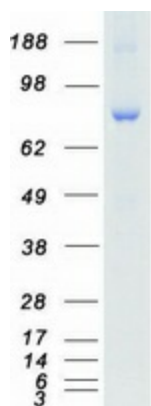
Synonyms: BL44; GCK; RAB8IP

Summary: The protein encoded by this gene is a member of the serine/threonine protein kinase family. Although this kinase is found in many tissues, its expression in lymphoid follicles is restricted to the cells of germinal centre, where it may participate in B-cell differentiation. This kinase can be activated by TNF-alpha, and has been shown to specifically activate MAP kinases. This kinase is also found to interact with TNF receptor-associated factor 2 (TRAF2), which is involved in the activation of MAP3K1/MEKK1. Alternative splicing results in multiple transcript variants. [provided by RefSeq, Apr 2015]

Protein Families: Druggable Genome, Protein Kinase

Protein Pathways: MAPK signaling pathway

Product images:



Coomassie blue staining of purified MAP4K2 protein (Cat# [TP317608]). The protein was produced from HEK293T cells transfected with MAP4K2 cDNA clone (Cat# [RC217608]) using MegaTran 2.0 (Cat# [TT210002]).