

Product datasheet for TP317601L

WIPF1 (NM_003387) Human Recombinant Protein

Product data:

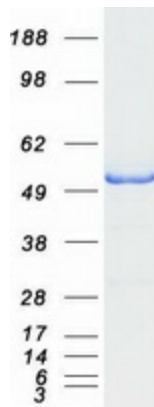
Product Type:	Recombinant Proteins
Description:	Recombinant protein of human WAS/WASL interacting protein family, member 1 (WIPF1), transcript variant 1, 1 mg
Species:	Human
Expression Host:	HEK293T
Expression cDNA Clone or AA Sequence:	>RC217601 representing NM_003387 Red =Cloning site Green =Tags(s) MPVPPPPAPPPPTFALANTEKPTLNKTEQAGRNALLSDISKGKKLKKTVTNDRSAPILDKPKGAGAGGG GGGFGGGGGFSGGGGGGGGGGSGGGGPPGLGGLFQAGMPKLRSTANRDNDSGGSRPPLLPPGGRSTSAKP FSPPSGPRFPVSPGHRSGPPEPQRNRMPPRPDVGSKPDSIPPPVPSTPRPIQSSLHNRGSPVPVGGP RQPSGPTPPFPNGRGTALGGGSIRQSPLSSSSPFSNRPLPPTPSRALDDKPPPPPPVGNRPSIHRE AVPPPPQNNKPPVPSTPRPSASSQAPPPPPPSRPGPPPLPSSSGNDETPRLPQRNLSLSSSTPPLPS PGRSGPLPPPPSERPPPPVRDPPGRSGPLPPPPVSRNGSTSRALPATPQLPSRSGVDSRSGRPPPLPP DRPSAGAPPPPPSTSRNGFQDSPCEDEWESRFYFHPISDLPPPEPVVQTTKSYPSKLARNESRSGSNR RERGAPLPPIPR TRTRPLEQKLISEEDLAANDILDYKDDDDKV
Tag:	C-Myc/DDK
Predicted MW:	51.1 kDa
Concentration:	>0.05 µg/µL as determined by microplate BCA method
Purity:	> 80% as determined by SDS-PAGE and Coomassie blue staining
Buffer:	25 mM Tris-HCl, 100 mM glycine, pH 7.3, 10% glycerol
Preparation:	Recombinant protein was captured through anti-DDK affinity column followed by conventional chromatography steps.
Note:	For testing in cell culture applications, please filter before use. Note that you may experience some loss of protein during the filtration process.
Storage:	Store at -80°C.



[View online »](#)

Stability:	Stable for 12 months from the date of receipt of the product under proper storage and handling conditions. Avoid repeated freeze-thaw cycles.
RefSeq:	<u>NP_003378</u>
Locus ID:	7456
UniProt ID:	<u>O43516</u> , <u>A0A140VJZ9</u> , <u>Q2YDC4</u>
RefSeq Size:	4605
Cytogenetics:	2q31.1
RefSeq ORF:	1509
Synonyms:	PRPL-2; WAS2; WASPIP; WIP
Summary:	This gene encodes a protein that plays an important role in the organization of the actin cytoskeleton. The encoded protein binds to a region of Wiskott-Aldrich syndrome protein that is frequently mutated in Wiskott-Aldrich syndrome, an X-linked recessive disorder. Impairment of the interaction between these two proteins may contribute to the disease. Two transcript variants encoding the same protein have been identified for this gene. [provided by RefSeq, Jul 2008]

Product images:



Coomassie blue staining of purified WIPF1 protein (Cat# [TP317601]). The protein was produced from HEK293T cells transfected with WIPF1 cDNA clone (Cat# [RC217601]) using MegaTran 2.0 (Cat# [TT210002]).