

Product datasheet for **TP317578L**

GPLD1 (NM_001503) Human Recombinant Protein

Product data:

Product Type:	Recombinant Proteins
Description:	Recombinant protein of human glycosylphosphatidylinositol specific phospholipase D1 (GPLD1), transcript variant 1, 1 mg
Species:	Human
Expression Host:	HEK293T
Expression cDNA Clone or AA Sequence:	>RC217578 representing NM_001503 Red =Cloning site Green =Tags(s)

MSAFRLWPGLLIMLGS LCHRGS PCLSTHVEIGHRALEFLQLHNGRVNYRELLLEHQDAYQAGIVFPDCF
YPSICKGGKFHDVSESTHWTPFLNASVHYIRENYPLPWEKDTEKLVAFLFGITSHMAADVSWHSLGLEQG
FLRTMGAIDFHGSYSEAH SAGDFGGDVLSQFEFNFNYLARRWYVPVKDLLGIYEKLYGRKVITENVIVDC
SHIQFLEMYGEMLA VSKLYPTYSTKSPFLVEQFQEYFLGGLDDMAFWSTNIYHLTSFMLENGTSDCNLPE
NPLFIACGGQQNHTQGS KMQKND FHRNLTTSLTESVDRNIN YTERGVFFSVNSWTPD SMSFIYKALERNI
RTMFIGGSQLSQKHVSSPLASYFLSFPYARLGWAMTSADLNQDGHGDLVVGAPGYSRPGHIHIGRVYLIY
GNDLGLPPVDL DL DKEAHRILEGFQPSGRFGSALAVLDFNVDGVPDLAVGAPSVGSEQLTYKGAVVYVFG
SKQGGMSSSPNITISCQDIYCNL GWTLAADVNGDSEPD LVIGSPFAPGGGKQKGIVAAAFYSGPSLSDKE
KLNVEAANWTVRGEEDFSWFGYSLHGVTVDNRTLLL VGSPTWKNASRLGHLLHIRDEKKS LGRVYGYFPP
NGQSWFTISGDKAMGKLG TSLSSGHVLMNGTLKQVLLV GAPTYYDDVSKVAFLVT LHQGGATRM YALISD
AQPLLLSTFSGDRRFRFGV LHLSDLDDDDGLDEI IMAAPLRIADVTSGLIGGEDGRVYVYNGKETT LGD
MTGKCKSWITPCPEEKAQYVLISPEASSRFGSSLITVRSKAKNQVIAAGRSSLGARLSGALHVYSLGSD

TRTRPLEQKLISEEDLAANDILDYKDDDDKV

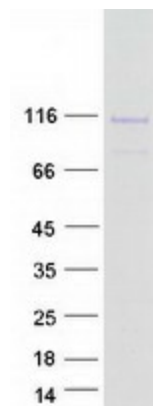
Tag:	C-Myc/DDK
Predicted MW:	89.8 kDa
Concentration:	>0.05 µg/µL as determined by microplate BCA method
Purity:	> 80% as determined by SDS-PAGE and Coomassie blue staining
Buffer:	25 mM Tris-HCl, 100 mM glycine, pH 7.3, 10% glycerol
Preparation:	Recombinant protein was captured through anti-DDK affinity column followed by conventional chromatography steps.



[View online »](#)

Note:	For testing in cell culture applications, please filter before use. Note that you may experience some loss of protein during the filtration process.
Storage:	Store at -80°C.
Stability:	Stable for 12 months from the date of receipt of the product under proper storage and handling conditions. Avoid repeated freeze-thaw cycles.
RefSeq:	NP_001494
Locus ID:	2822
UniProt ID:	P80108
RefSeq Size:	3489
Cytogenetics:	6p22.3
RefSeq ORF:	2520
Synonyms:	GPIPLD; GPIPLDM; PIGPLD; PIGPLD1; PLD
Summary:	Many proteins are tethered to the extracellular face of eukaryotic plasma membranes by a glycosylphosphatidylinositol (GPI) anchor. The GPI-anchor is a glycolipid found on many blood cells. The protein encoded by this gene is a GPI degrading enzyme. Glycosylphosphatidylinositol specific phospholipase D1 hydrolyzes the inositol phosphate linkage in proteins anchored by phosphatidylinositol glycans, thereby releasing the attached protein from the plasma membrane. [provided by RefSeq, Jul 2008]
Protein Families:	Druggable Genome, Secreted Protein
Protein Pathways:	Glycosylphosphatidylinositol(GPI)-anchor biosynthesis

Product images:



Coomassie blue staining of purified GPLD1 protein (Cat# [TP317578]). The protein was produced from HEK293T cells transfected with GPLD1 cDNA clone (Cat# [RC217578]) using MegaTran 2.0 (Cat# [TT210002]).