

## Product datasheet for **TP317556**

### **RHOC (NM\_175744) Human Recombinant Protein**

#### **Product data:**

**Product Type:** Recombinant Proteins

**Description:** Recombinant protein of human ras homolog gene family, member C (RHOC), transcript variant 1, 20 µg

**Species:** Human

**Expression Host:** HEK293T

**Expression cDNA Clone or AA Sequence:** >RC217556 representing NM\_175744  
**Red**=Cloning site **Green**=Tags(s)

MAAIRKKLVIVGDGACGKTCLLIVFSKQDFPEVYVPTVFENYIADIEVDGKQVELALWDTAGQEDYDRLR  
PLSYPD TDVILMCF SIDSPDSLENIPEKWTPEVKHF CPNVPIILVGNKKDLRQDEHTRRELAKMKQEPVR  
SEEGRDMANRISAFGYLECSAKTKEGVREVFEMATRAGLQVRKNKRRRGCPIL

**TRTRPLEQKLISEEDLAANDILDYKDDDDKV**

**Tag:** C-Myc/DDK

**Predicted MW:** 21.8 kDa

**Concentration:** >0.05 µg/µL as determined by microplate BCA method

**Purity:** > 80% as determined by SDS-PAGE and Coomassie blue staining

**Buffer:** 25 mM Tris-HCl, 100 mM glycine, pH 7.3, 10% glycerol

**Preparation:** Recombinant protein was captured through anti-DDK affinity column followed by conventional chromatography steps.

**Note:** For testing in cell culture applications, please filter before use. Note that you may experience some loss of protein during the filtration process.

**Storage:** Store at -80°C.

**Stability:** Stable for 12 months from the date of receipt of the product under proper storage and handling conditions. Avoid repeated freeze-thaw cycles.

**RefSeq:** [NP\\_786886](#)

**Locus ID:** 389

**UniProt ID:** [P08134](#), [A0A024ROC8](#)



[View online »](#)

RefSeq Size: 1116

Cytogenetics: 1p13.2

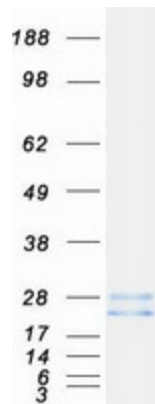
RefSeq ORF: 579

Synonyms: ARH9; ARHC; H9; RHOH9

**Summary:** This gene encodes a member of the Rho family of small GTPases, which cycle between inactive GDP-bound and active GTP-bound states and function as molecular switches in signal transduction cascades. Rho proteins promote reorganization of the actin cytoskeleton and regulate cell shape, attachment, and motility. The protein encoded by this gene is prenylated at its C-terminus, and localizes to the cytoplasm and plasma membrane. It is thought to be important in cell locomotion. Overexpression of this gene is associated with tumor cell proliferation and metastasis. Multiple alternatively spliced variants, encoding the same protein, have been identified. [provided by RefSeq, Jul 2008]

**Protein Families:** Druggable Genome

### Product images:



Coomassie blue staining of purified RHOC protein (Cat# TP317556). The protein was produced from HEK293T cells transfected with RHOC cDNA clone (Cat# [RC217556]) using MegaTran 2.0 (Cat# [TT210002]).