

Product datasheet for **TP317548M**

PPM1H (NM_020700) Human Recombinant Protein

Product data:

Product Type:	Recombinant Proteins
Description:	Recombinant protein of human protein phosphatase 1H (PP2C domain containing) (PPM1H), 100 µg
Species:	Human
Expression Host:	HEK293T
Expression cDNA Clone or AA Sequence:	>RC217548 representing NM_020700 Red =Cloning site Green =Tags(s)

MLTRVKSAVANFMGGIMAGSSGSEHGGGSCGGSDLPLRFPYGRPEFLGLSQDEVECSADHIARPILILKE
TRRLPWATGYAEVINAGKSTHNEDQASCEVLTVKKKAGAVTSTPNRNSSKRRSSLPNGEGLQLKENSESE
GVSCHYWSLFDGHAGSGAAVVASRLLQHHITEQLQDIVDILKNSAVLPPTCLGEEPENTPANSRTLTRAA
SLRGGVGAPGSPSTPPTTRFFTEKKIPHECLVIGALESFAKEMDLQIERERSSYNISGGCTALIVICLLGK
LYVANAGDSRAIIIRNGEIIIPMSSEFTPETERQLQYLAFMQPHLLGNEFTHLEFPRRVQRKELGKKMLY
RDFNMTGWAYKTIEDLKFPLIYGEGKKARVMATIGVTRGLGDHDLKVHDSNIYIKPFLSSAPEVRIYD
LSKYDHGSDDLILATDGLWDVLSNEEVAEAITQLPNCDDPHRYTLAAQDLVMRARGVLKDRGWRI
NDRLGSGDDISVYIPLIHGNKLS

TRTRPLEQKLISEEDLAANDILDYKDDDDKV

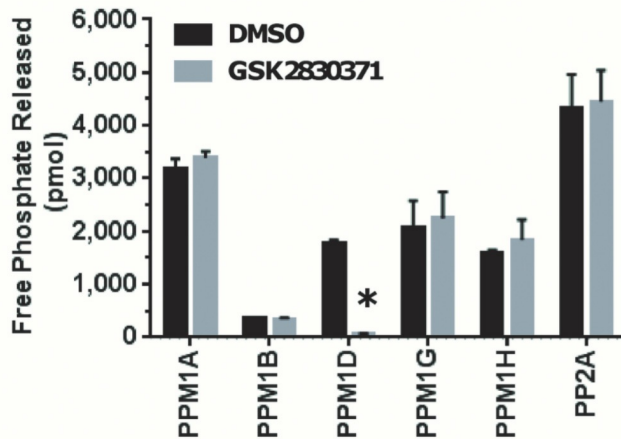
Tag:	C-Myc/DDK
Predicted MW:	56.3 kDa
Concentration:	>0.05 µg/µL as determined by microplate BCA method
Purity:	> 80% as determined by SDS-PAGE and Coomassie blue staining
Buffer:	25 mM Tris-HCl, 100 mM glycine, pH 7.3, 10% glycerol
Bioactivity:	In vitro phosphatase assay (PMID: 25658463)
Preparation:	Recombinant protein was captured through anti-DDK affinity column followed by conventional chromatography steps.
Note:	For testing in cell culture applications, please filter before use. Note that you may experience some loss of protein during the filtration process.
Storage:	Store at -80°C.



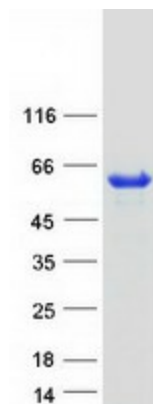
[View online »](#)

Stability:	Stable for 12 months from the date of receipt of the product under proper storage and handling conditions. Avoid repeated freeze-thaw cycles.
RefSeq:	NP_065751
Locus ID:	57460
UniProt ID:	Q9ULR3
RefSeq Size:	6201
Cytogenetics:	12q14.1-q14.2
RefSeq ORF:	1542
Synonyms:	ARHCL1; NERPP-2C; URCC2
Summary:	Dephosphorylates CDKN1B at 'Thr-187', thus removing a signal for proteasomal degradation. [UniProtKB/Swiss-Prot Function]
Protein Families:	Phosphatase

Product images:



Release of free phosphate was measured after incubation of different protein phosphatases, including PPM1H (OriGene [TP317548]), with the generic phosphopeptide, RRA (pT)VA. * $p < 0.01$. Figure cited from PLoS ONE, PMID: 25658463



Coomassie blue staining of purified PPM1H protein (Cat# [TP317548]). The protein was produced from HEK293T cells transfected with PPM1H cDNA clone (Cat# [RC217548]) using MegaTran 2.0 (Cat# [TT210002]).