

## Product datasheet for **TP317529M**

### Syntaxin 2 (STX2) (NM\_194356) Human Recombinant Protein

#### Product data:

Product Type:	Recombinant Proteins
Description:	Recombinant protein of human syntaxin 2 (STX2), transcript variant 2, 100 µg
Species:	Human
Expression Host:	HEK293T
Expression cDNA Clone or AA Sequence:	>RC217529 representing NM_194356 <b>Red</b> =Cloning site <b>Green</b> =Tags(s)
	MRDRLPDLTACRKNDDGDTVWVEKDHFMDDFFHQVEEIRNTIDKITQYVEEVKKNHSIILSAPNPEGKI KEELEDLNKEIKKTANKIRAKLKAIEQSFQDESGNRTSVDLRIRRTQHSVLSRKFVEAMAQYNEAQLF RERSKGRIQRQLEITGRITTTDDELEEMLESGKPSIFTSDIISDSQITRQALNEIESRHKDIMKLETSIRE LHEMFMDMAMFVETQGEMINNIERNVMNATDYVEHAKEETKKAIKYQSKARRKKWIIAVSVVLVAIAL IIGLSVGK
	<b>TR</b> TRPLE <b>QKLISEEDLAANDILDYKDDDDKV</b>
Tag:	C-Myc/DDK
Predicted MW:	33.2 kDa
Concentration:	>0.05 µg/µL as determined by microplate BCA method
Purity:	> 80% as determined by SDS-PAGE and Coomassie blue staining
Buffer:	25 mM Tris-HCl, 100 mM glycine, pH 7.3, 10% glycerol
Preparation:	Recombinant protein was captured through anti-DDK affinity column followed by conventional chromatography steps.
Note:	For testing in cell culture applications, please filter before use. Note that you may experience some loss of protein during the filtration process.
Storage:	Store at -80°C.
Stability:	Stable for 12 months from the date of receipt of the product under proper storage and handling conditions. Avoid repeated freeze-thaw cycles.
RefSeq:	<u><a href="#">NP_919337</a></u>
Locus ID:	2054



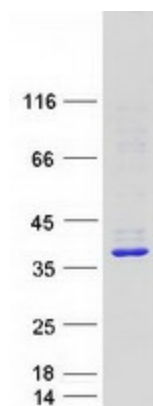
[View online »](#)

UniProt ID: [P32856](#)  
RefSeq Size: 3469  
Cytogenetics: 12q24.33  
RefSeq ORF: 864  
Synonyms: EPIM; EPM; STX2A; STX2B; STX2C

**Summary:** The product of this gene belongs to the syntaxin/epimorphin family of proteins. The syntaxins are a large protein family implicated in the targeting and fusion of intracellular transport vesicles. The product of this gene regulates epithelial-mesenchymal interactions and epithelial cell morphogenesis and activation. Alternatively spliced transcript variants encoding different isoforms have been identified. [provided by RefSeq, Jul 2008]

**Protein Families:** Druggable Genome, Transmembrane  
**Protein Pathways:** SNARE interactions in vesicular transport

### Product images:



Coomassie blue staining of purified STX2 protein (Cat# [TP317529]). The protein was produced from HEK293T cells transfected with STX2 cDNA clone (Cat# [RC217529]) using MegaTran 2.0 (Cat# [TT210002]).