

Product datasheet for **TP317529L**

Syntaxin 2 (STX2) (NM_194356) Human Recombinant Protein

Product data:

Product Type:	Recombinant Proteins
Description:	Recombinant protein of human syntaxin 2 (STX2), transcript variant 2, 1 mg
Species:	Human
Expression Host:	HEK293T
Expression cDNA Clone or AA Sequence:	>RC217529 representing NM_194356 Red =Cloning site Green =Tags(s)
	MRDRLPDLTACRKNDDGDTVVVVEKDHFMDDFFHQVEEIRNTIDKITQYVEEVKKNHSIILSAPNPEGKI KEELEDLNKEIKKTANKIRAKLKAIEQSFQDESGNRTSVDLRIRRTQHSVLSRKFVEAMAQYNEAQLF RERSKGRIQRQLEITGRITTTDDELEEMLESGKPSIFTSDIISDSQITRQALNEIESRHKDIMKLETSIRE LHEMFMDMAMFVETQGEMINNIERNVMNATDYVEHAKEETKKAIKYQSKARRKKWIIAVSVVLVAIAL IIGLSVGK
	TR TRPLE QKLISEEDLAANDILDYKDDDDKV
Tag:	C-Myc/DDK
Predicted MW:	33.2 kDa
Concentration:	>0.05 µg/µL as determined by microplate BCA method
Purity:	> 80% as determined by SDS-PAGE and Coomassie blue staining
Buffer:	25 mM Tris-HCl, 100 mM glycine, pH 7.3, 10% glycerol
Preparation:	Recombinant protein was captured through anti-DDK affinity column followed by conventional chromatography steps.
Note:	For testing in cell culture applications, please filter before use. Note that you may experience some loss of protein during the filtration process.
Storage:	Store at -80°C.
Stability:	Stable for 12 months from the date of receipt of the product under proper storage and handling conditions. Avoid repeated freeze-thaw cycles.
RefSeq:	<u>NP_919337</u>
Locus ID:	2054



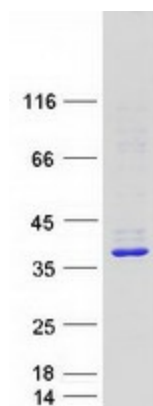
[View online »](#)

UniProt ID: [P32856](#)
RefSeq Size: 3469
Cytogenetics: 12q24.33
RefSeq ORF: 864
Synonyms: EPIM; EPM; STX2A; STX2B; STX2C

Summary: The product of this gene belongs to the syntaxin/epimorphin family of proteins. The syntaxins are a large protein family implicated in the targeting and fusion of intracellular transport vesicles. The product of this gene regulates epithelial-mesenchymal interactions and epithelial cell morphogenesis and activation. Alternatively spliced transcript variants encoding different isoforms have been identified. [provided by RefSeq, Jul 2008]

Protein Families: Druggable Genome, Transmembrane
Protein Pathways: SNARE interactions in vesicular transport

Product images:



Coomassie blue staining of purified STX2 protein (Cat# [TP317529]). The protein was produced from HEK293T cells transfected with STX2 cDNA clone (Cat# [RC217529]) using MegaTran 2.0 (Cat# [TT210002]).