

Product datasheet for **TP317513L**

MTCP1 (NM_001018025) Human Recombinant Protein

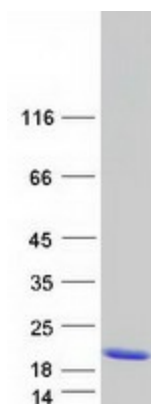
Product data:

Product Type:	Recombinant Proteins
Description:	Recombinant protein of human mature T-cell proliferation 1 (MTCP1), nuclear gene encoding mitochondrial protein, transcript variant B1, 1 mg
Species:	Human
Expression Host:	HEK293T
Expression cDNA Clone or AA Sequence:	>RC217513 representing NM_001018025 Red =Cloning site Green =Tags(s) MAGEDVGAPPDHLWVHQEGIYRDEYQRTWVAVVEETSFLRARVQQIQVPLGDAARPSHLLTSQLPLM WQ LYPEERYMDNNSRLWQIQHHLMVRGVQELLLKLLPDD TR TRPLEQKLISEEDLAANDILDYKDDDDKV
Tag:	C-Myc/DDK
Predicted MW:	12.4 kDa
Concentration:	>0.05 µg/µL as determined by microplate BCA method
Purity:	> 80% as determined by SDS-PAGE and Coomassie blue staining
Buffer:	25 mM Tris-HCl, 100 mM glycine, pH 7.3, 10% glycerol
Preparation:	Recombinant protein was captured through anti-DDK affinity column followed by conventional chromatography steps.
Note:	For testing in cell culture applications, please filter before use. Note that you may experience some loss of protein during the filtration process.
Storage:	Store at -80°C.
Stability:	Stable for 12 months from the date of receipt of the product under proper storage and handling conditions. Avoid repeated freeze-thaw cycles.
RefSeq:	<u>NP_001018025</u>
Locus ID:	4515
UniProt ID:	<u>P56278</u>


[View online »](#)

RefSeq Size:	1943
Cytogenetics:	Xq28
RefSeq ORF:	321
Synonyms:	p8MTCP1; P13MTCP1; TCL1C
Summary:	This gene was identified by involvement in some t(X;14) translocations associated with mature T-cell proliferations. This region has a complex gene structure, with a common promoter and 5' exon spliced to two different sets of 3' exons that encode two different proteins. This gene represents the upstream 13 kDa protein that is a member of the TCL1 family. This protein may be involved in leukemogenesis. [provided by RefSeq, Mar 2009]

Product images:



Coomassie blue staining of purified MTCP1 protein (Cat# [TP317513]). The protein was produced from HEK293T cells transfected with MTCP1 cDNA clone (Cat# [RC217513]) using MegaTran 2.0 (Cat# [TT210002]).