

Product datasheet for **TP317501M**

GLIPR2 (NM_022343) Human Recombinant Protein

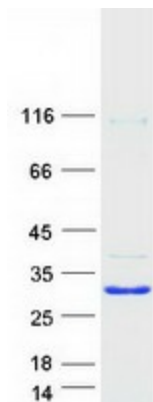
Product data:

Product Type:	Recombinant Proteins
Description:	Recombinant protein of human GLI pathogenesis-related 2 (GLIPR2), 100 µg
Species:	Human
Expression Host:	HEK293T
Expression cDNA Clone or AA Sequence:	>RC217501 representing NM_022343 Red =Cloning site Green =Tags(s)
	 MGKSASKQFHNEVLKAHNEYRQKHGVPPLKLCNLNREAQQYSEALASTRILKHSPESSRGQCGENLAWA SYDQTGKEVADRWYSEIKNYNFQQPGFTSGTGHFTAMVWKNTKKMGVKGASASDGSSFVARYFPAGNVV NEGFFEENVLPPKK TRTRPLEQKLISEEDLAANDILDYKDDDDKV
Tag:	C-Myc/DDK
Predicted MW:	17 kDa
Concentration:	>0.05 µg/µL as determined by microplate BCA method
Purity:	> 80% as determined by SDS-PAGE and Coomassie blue staining
Buffer:	25 mM Tris-HCl, 100 mM glycine, pH 7.3, 10% glycerol
Preparation:	Recombinant protein was captured through anti-DDK affinity column followed by conventional chromatography steps.
Note:	For testing in cell culture applications, please filter before use. Note that you may experience some loss of protein during the filtration process.
Storage:	Store at -80°C.
Stability:	Stable for 12 months from the date of receipt of the product under proper storage and handling conditions. Avoid repeated freeze-thaw cycles.
RefSeq:	NP_071738
Locus ID:	152007
UniProt ID:	Q9H4G4
RefSeq Size:	1900



[View online »](#)

Cytogenetics: 9p13.3
RefSeq ORF: 462
Synonyms: C9orf19; GAPR-1; GAPR1

Product images:

Coomassie blue staining of purified GLIPR2 protein (Cat# [TP317501]). The protein was produced from HEK293T cells transfected with GLIPR2 cDNA clone (Cat# [RC217501]) using MegaTran 2.0 (Cat# [TT210002]).