

## Product datasheet for **TP317500M**

### **SAMD7 (NM\_182610) Human Recombinant Protein**

#### **Product data:**

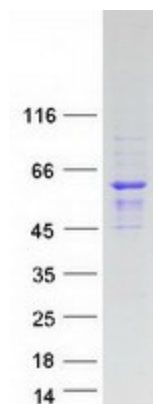
<b>Product Type:</b>	Recombinant Proteins
<b>Description:</b>	Recombinant protein of human sterile alpha motif domain containing 7 (SAMD7), 100 µg
<b>Species:</b>	Human
<b>Expression Host:</b>	HEK293T
<b>Expression cDNA Clone or AA Sequence:</b>	>RC217500 representing NM_182610 <b>Red</b> =Cloning site <b>Green</b> =Tags(s)  MAVNPLLTPTGQQTIPSPFPGPPTVDRDLPSTVAPTDPQFCVPSQFGSSVLPNTNMANVLSSRIYP GWGILPPESIKAVARRNEMIQRHHTARTEMEMYAIYQRRMEKINPKGLAGLGIPFLYGSSVPAAPAAHY GRSMLPAGDLHFHRSTLRNLQGNPMLAATAPHFEESWGQRCRRLRKNTGNQKALDSAESSKSQAEEL L GQTHAVPYEEDHYAKDPDIEAPSNQKSSETNEKPTTALANTCGELEPTHRKPWGSHTTTLKAKAWDDGKE EASEQIFATCDEKNGVCPPVPRPSLPGTHALVTIGGNLSLDEDIQKWTVDVHSFIRSLPGCSDYAQVFK DHAIDGETLPLLTEEHLRGTMGLKLGPAIKIQSQVSHVGSVMFYKKTLSFPIRQAFDQPADTSPLLDPNS WSDTMNIFCPQDTIIPKGIERGSMRN  <b>TRTRPLEQKLISEEDLAANDILDYKDDDDKV</b>
<b>Tag:</b>	C-Myc/DDK
<b>Predicted MW:</b>	48.9 kDa
<b>Concentration:</b>	>0.05 µg/µL as determined by microplate BCA method
<b>Purity:</b>	> 80% as determined by SDS-PAGE and Coomassie blue staining
<b>Buffer:</b>	25 mM Tris-HCl, 100 mM glycine, pH 7.3, 10% glycerol
<b>Preparation:</b>	Recombinant protein was captured through anti-DDK affinity column followed by conventional chromatography steps.
<b>Note:</b>	For testing in cell culture applications, please filter before use. Note that you may experience some loss of protein during the filtration process.
<b>Storage:</b>	Store at -80°C.
<b>Stability:</b>	Stable for 12 months from the date of receipt of the product under proper storage and handling conditions. Avoid repeated freeze-thaw cycles.



[View online »](#)

RefSeq:	<u>NP_872416</u>
Locus ID:	344658
UniProt ID:	<u>Q7Z3H4</u>
RefSeq Size:	2281
Cytogenetics:	3q26.2
RefSeq ORF:	1338
Summary:	Involved in the regulation of gene expression in the retina. It functions as a negative regulator of CRX-controlled genes.[UniProtKB/Swiss-Prot Function]

### Product images:



Coomassie blue staining of purified SAMD7 protein (Cat# [TP317500]). The protein was produced from HEK293T cells transfected with SAMD7 cDNA clone (Cat# [RC217500]) using MegaTran 2.0 (Cat# [TT210002]).