

Product datasheet for **TP317500**

SAMD7 (NM_182610) Human Recombinant Protein

Product data:

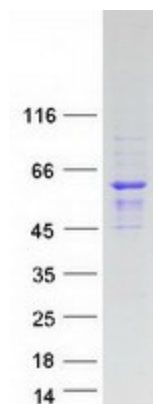
Product Type:	Recombinant Proteins
Description:	Recombinant protein of human sterile alpha motif domain containing 7 (SAMD7), 20 µg
Species:	Human
Expression Host:	HEK293T
Expression cDNA Clone or AA Sequence:	>RC217500 representing NM_182610 Red =Cloning site Green =Tags(s) MAVNPLLTPGQQTIPSPFPGPPTVDRDLPSTVAPTDPQFCVPSQFGSSVLPNTNMANVLSSRIYP GWGILPPESIKAVARRNEMIQRHHTARTEMEMYAIYQQRMEKINPKGLAGLGIPFLYGSSVPAAPAAHY GRSMLPAGDLHFHRSTLRNLQGNPMLAATAPHFEESWGQRCRRLRKNTGNQKALDSAESSKSQAEKI L GQTHAVPYEEDHYAKDPDIEAPSNQKSSETNEKPTTALANTCGELEPTHRKPWGSHTTTLKAKAWDDGKE EASEQIFATCDEKNGVCPPVPRPSLPGTHALVTIGGNLSLDEDIQKWTVDVHSEFIRSLPGCSDYAQVFK DHAIDGETLPLLTEEHLRGTMLGLGPALKIQSQVSQHVGSMSFYKKTLSFPIRQAFDQPADTSPLLDPNS WSDTMNIFCPQDTIIPKGIERGSMRN TRTRPLEQKLISEEDLAANDILDYKDDDDKV
Tag:	C-Myc/DDK
Predicted MW:	48.9 kDa
Concentration:	>0.05 µg/µL as determined by microplate BCA method
Purity:	> 80% as determined by SDS-PAGE and Coomassie blue staining
Buffer:	25 mM Tris-HCl, 100 mM glycine, pH 7.3, 10% glycerol
Preparation:	Recombinant protein was captured through anti-DDK affinity column followed by conventional chromatography steps.
Note:	For testing in cell culture applications, please filter before use. Note that you may experience some loss of protein during the filtration process.
Storage:	Store at -80°C.
Stability:	Stable for 12 months from the date of receipt of the product under proper storage and handling conditions. Avoid repeated freeze-thaw cycles.



[View online »](#)

RefSeq:	<u>NP_872416</u>
Locus ID:	344658
UniProt ID:	<u>Q7Z3H4</u>
RefSeq Size:	2281
Cytogenetics:	3q26.2
RefSeq ORF:	1338
Summary:	Involved in the regulation of gene expression in the retina. It functions as a negative regulator of CRX-controlled genes.[UniProtKB/Swiss-Prot Function]

Product images:



Coomassie blue staining of purified SAMD7 protein (Cat# TP317500). The protein was produced from HEK293T cells transfected with SAMD7 cDNA clone (Cat# [RC217500]) using MegaTran 2.0 (Cat# [TT210002]).