

Product datasheet for **TP317484**

CDADC1 (NM_030911) Human Recombinant Protein

Product data:

Product Type:	Recombinant Proteins
Description:	Recombinant protein of human cytidine and dCMP deaminase domain containing 1 (CDADC1), 20 µg
Species:	Human
Expression Host:	HEK293T
Expression cDNA Clone or AA Sequence:	>RC217484 protein sequence Red =Cloning site Green =Tags(s)

MKEAGQMQNLESARAGRSVSTQTGSMTGQIPRLSKVNLFTLLSLWMELFPAAEQRQKSQKNEEGKHGPLG
DNEERTRVSTDKRQVKRTGLVWVKNMKIVGLHCSSEDLHAGQIALIKHGSRLKNCPLYFSRKPCSACLKM
IVNAGVNRISYWPADPEISLLTEASSEDAKLDKAVERLKSNSRAHVCVLLQPLVCYMVQFVEETSYKC
DFIQKITKTLPDANTDFYIECKQERIKKEYEMLFLVSNEEMHKQILMTIGLENLCENPYFSNLRQNMKDLI
LLLATVASSVPNFKHFGFYRSNPEQINEIHNQSLPQEIARHCMVQARLLAYRTEDHKTGVGAVIWAEGKS
RSCDGTGAMYFVCGYNAFPVGEYADFPHMDDKQKDREIRKFRYIIHAEQNALTRCQEIKPEERSMIF
VTKPCDCECVPLIKGAGIKQIYAGDVDVVGKKKADISYMRFGELEGVSKFTWQLNPSGAYGLEQNEPERRE
NGVLRPVPQKEEQHQDKKLRLLGIH

TRTRPLEQKLISEEDLAANDILDYKDDDDKV

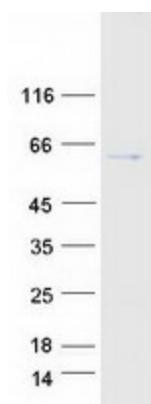
Tag:	C-Myc/DDK
Predicted MW:	58.3 kDa
Concentration:	>0.05 µg/µL as determined by microplate BCA method
Purity:	> 80% as determined by SDS-PAGE and Coomassie blue staining
Buffer:	25 mM Tris-HCl, 100 mM glycine, pH 7.3, 10% glycerol
Preparation:	Recombinant protein was captured through anti-DDK affinity column followed by conventional chromatography steps.
Note:	For testing in cell culture applications, please filter before use. Note that you may experience some loss of protein during the filtration process.
Storage:	Store at -80°C.



[View online »](#)

Stability:	Stable for 12 months from the date of receipt of the product under proper storage and handling conditions. Avoid repeated freeze-thaw cycles.
RefSeq:	NP_112173
Locus ID:	81602
UniProt ID:	Q9BWW3
RefSeq Size:	3417
Cytogenetics:	13q14.2
RefSeq ORF:	1542
Synonyms:	bA103J18.1; NYD-SP15
Summary:	May play an important role in testicular development and spermatogenesis.[UniProtKB/Swiss-Prot Function]

Product images:



Coomassie blue staining of purified CDADC1 protein (Cat# TP317484). The protein was produced from HEK293T cells transfected with CDADC1 cDNA clone (Cat# [RC217484]) using MegaTran 2.0 (Cat# [TT210002]).