

Product datasheet for TP317483

PRMT4 (CARM1) (NM_199141) Human Recombinant Protein

Product data:

Product Type:	Recombinant Proteins
Description:	Recombinant protein of human coactivator-associated arginine methyltransferase 1 (CARM1), 20 µg
Species:	Human
Expression Host:	HEK293T
Expression cDNA Clone or AA Sequence:	>RC217483 representing NM_199141 Red =Cloning site Green =Tags(s)

MAAAAAVGPAGGAGGAGSAVPGGAGPCATVSVFPGARLLTIGDANGEIQRHAEQQALRLEVRAGPDSAGIALYSHEDVCVFKCSVSRETECSRVGKQSFIIITLGCNSVLIQFATPNDFCFSFYNIKTCRGHTLERSVFSERTEESSAVQYFQFYGYLSQQQNMMDYVRTGTYQRAILQNHTDFKDKIVLDVXLWLWDPVWFCRPSWSTENLRGXRPAWPSTXEVLVKSNNLTDRIWVPGKVXGXCXXPXXQVDIIXLGAHGLHALQRXACWRATSTPXKYLKPSGNMFPTIGDVHLAPFTDEQLYMEQFTKANFWYQPSFHGVDSLALRGAADVFRQPVVDTDFDIRILMAKSVKYTVNFLEAKEGDLHRIEIPFKFHMLHSGLVHGLAFWFDVAFIGSIMTVWLSTAPTEPLTHWYQVRCLFQSPLFAKAGDTLSGTCLLIANKRQSYDISIVAQVDQTGSKSSNLLDLKNPFFRYGTTPSPPPGSHYTSPSENMWNTGSTYNLSSGMAVAGMPTAYDLSSVIASGSSVGHNNLIPLANTGIVNHTHSRMGSIMSTGIVQGSSGAQGGGGSTSAHYAVNSQFTMGGPAISMASPMSIPTNTMHYGS

TRTRPLEQKLISEEDLAANDILDYKDDDDKV

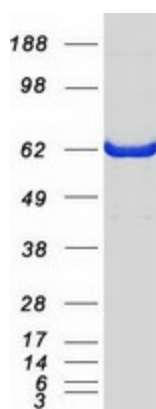
Tag:	C-Myc/DDK
Predicted MW:	65.7 kDa
Concentration:	>0.05 µg/µL as determined by microplate BCA method
Purity:	> 80% as determined by SDS-PAGE and Coomassie blue staining
Buffer:	25 mM Tris-HCl, 100 mM glycine, pH 7.3, 10% glycerol
Preparation:	Recombinant protein was captured through anti-DDK affinity column followed by conventional chromatography steps.
Note:	For testing in cell culture applications, please filter before use. Note that you may experience some loss of protein during the filtration process.



[View online »](#)

Storage:	Store at -80°C.
Stability:	Stable for 12 months from the date of receipt of the product under proper storage and handling conditions. Avoid repeated freeze-thaw cycles.
RefSeq:	NP_954592
Locus ID:	10498
UniProt ID:	Q86X55
RefSeq Size:	2968
Cytogenetics:	19p13.2
RefSeq ORF:	1836
Synonyms:	PRMT4
Summary:	This gene belongs to the protein arginine methyltransferase (PRMT) family. The encoded enzyme catalyzes the methylation of guanidino nitrogens of arginyl residues of proteins. The enzyme acts specifically on histones and other chromatin-associated proteins and is involved in regulation of gene expression. The enzyme may act in association with other proteins or within multi-protein complexes and may play a role in cell type-specific functions and cell lineage specification. A related pseudogene is located on chromosome 9. [provided by RefSeq, Aug 2013]
Protein Families:	Druggable Genome, Transcription Factors

Product images:



Coomassie blue staining of purified CARM1 protein (Cat# TP317483). The protein was produced from HEK293T cells transfected with CARM1 cDNA clone (Cat# [RC217483]) using MegaTran 2.0 (Cat# [TT210002]).