

## Product datasheet for TP317462

### RSC1A1 (NM\_006511) Human Recombinant Protein

#### Product data:

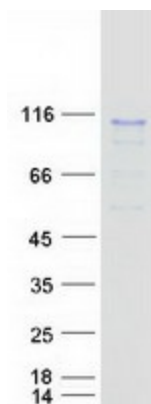
Product Type:	Recombinant Proteins
Description:	Recombinant protein of human regulatory solute carrier protein, family 1, member 1 (RSC1A1), 20 µg
Species:	Human
Expression Host:	HEK293T
Expression cDNA Clone or AA Sequence:	>RC217462 representing NM_006511 <b>Red</b> =Cloning site <b>Green</b> =Tags(s)
	MSSLPTSDGFNHPARSSGQSPDVGNPMSLARSVSASVCPKIPSDSDRIEPKAVKALKASAEFQLNSEKKE HLSLQDLSDHASSADHAPTDQSPAMPMQNSSEIITVAGNLEKSAERSTQGLKFHLHTRQEASLSVTSTRM HEPQMFLGEKDWHPENQNLQVSDPQQHEEPGNEQYEVAQQKASHDQEYLCNIGDLELPEERQQNQHKIV DLEATMKGNGLPQNVDPSSAKKSIPSECSGCSNSETFMEIDTAQQSLVTLLNSTGRQANVKNIGALDL TLDNPLMEVETSKCNPSSEILNDSISTQDLQPPETNVEIPGTNKEYGHYSSPSLCGSCQPSVESAEESCP SITAALKELHELLVSSKPASENTSEEVICQSETIAEGQTSIKDLSERWTQNEHLTQNEQCPQVFSFHQAI SVSVETEKLGTSSDTGREAVENVNFRSLGDLGLSTDKEGVPKSRRESINKNRSVTVTSKTSNQLHCTLGV EISPKLLAGEEDALNQTSEQTKSLSSNFILVKDLGQGIQNSVTDRPETRENVCPDASRPALLEYEPPTSHP SSSPAILPPLIFPATDIDRILRAGFTLQEALGALHRVGGNADLALLVLLAKNIVPT
	<b>TRTRPLEQKLISEEDLAANDILDYKDDDDKV</b>
Tag:	C-Myc/DDK
Predicted MW:	66.6 kDa
Concentration:	>0.05 µg/µL as determined by microplate BCA method
Purity:	> 80% as determined by SDS-PAGE and Coomassie blue staining
Buffer:	25 mM Tris-HCl, 100 mM glycine, pH 7.3, 10% glycerol
Preparation:	Recombinant protein was captured through anti-DDK affinity column followed by conventional chromatography steps.
Note:	For testing in cell culture applications, please filter before use. Note that you may experience some loss of protein during the filtration process.
Storage:	Store at -80°C.



[View online »](#)

<b>Stability:</b>	Stable for 12 months from the date of receipt of the product under proper storage and handling conditions. Avoid repeated freeze-thaw cycles.
<b>RefSeq:</b>	<a href="#">NP_006502</a>
<b>Locus ID:</b>	6248
<b>UniProt ID:</b>	<a href="#">Q92681</a>
<b>RefSeq Size:</b>	1854
<b>Cytogenetics:</b>	1p36.21
<b>RefSeq ORF:</b>	1851
<b>Synonyms:</b>	RS1
<b>Summary:</b>	The protein encoded by this intronless gene inhibits the expression of the solute carrier family 5 (sodium/glucose cotransporter), member 1 gene (SLC5A1) and downregulates exocytosis of the SLC5A1 protein. The encoded protein is sometimes found coating the trans-Golgi network and other times is localized to the nucleus, depending on the cell cycle stage. This protein also inhibits the expression of solute carrier family 22 (organic cation transporter), member 2 (SLC22A2). [provided by RefSeq, Dec 2015]
<b>Protein Families:</b>	Druggable Genome

### Product images:



Coomassie blue staining of purified RSC1A1 protein (Cat# TP317462). The protein was produced from HEK293T cells transfected with RSC1A1 cDNA clone (Cat# [RC217462]) using MegaTran 2.0 (Cat# [TT210002]).