

Product datasheet for **TP317456**

INTS1 (NM_001080453) Human Recombinant Protein

Product data:

Product Type:	Recombinant Proteins
Description:	Recombinant protein of human integrator complex subunit 1 (INTS1), 20 µg
Species:	Human
Expression Host:	HEK293T



[View online »](#)

Expression cDNA Clone >RC217456 representing NM_001080453
 or AA Sequence: Red=Cloning site Green=Tags(s)

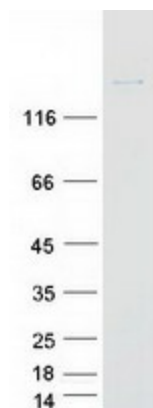
MNRAKPTTVRRPSAAAKPSGHPPPGRDIALGSKGQANESKTASTLLKPAPSGLPSEKRDAAAALSSASA
 LTGLTKRPKLSSTPPLSALGRLAEAAVAEKRAISPSIKEPSVPIEVLPTVLLDEIEAAELEGNDRIEG
 VLCGAVKQLKVTRAKPDSTLYLSMLYAKIKPNIFATEGVIEALCSLLRRDASINFKAKGNSLVSVLACN
 LLMAAYEEDENWPEIFVKVYIEDSLGERIWWVDSPHCKTFVDNIQTAFNTRMPPRSVLLQGEAGRVAGDLG
 AGSSPHPSLTHEEDSQTELLIAEEKLSPEQEGQLMPRYEELAESVEEYVLDMLRDQLNRRQPIDNVSRL
 LRLLTSTCGYKEVRLLAVQKLEMWLNPNKLRPAQDLLMSVCMNCNTHGSEDMDVISHLIKIRLKPVLL
 NHFMLCIRELLSAHKDNLGTTIKLVIFNELSSARNPNMQLVLYTALQHSELAPKFLAMVFQDLLTNKDD
 YLRASRALLREIKQTKHEINFQAFCLGLMQRKEPQYLEMEFKERFVWHITDVLAVSMMLGITAQVKEA
 GIAWDKGEKRNLEVLRSFQNIQAAIQRDAVWWLHTVVPSSISKLAPKDYVHCLHKLVFTEQPETYKWDNW
 PPESDRNFRLRCSEVPILEDTLMRILVIGLSRELPLGPADAMELADHLVKRAAAVQADDVEVLKVGRTQ
 LIDAVLNLCTYHHPENIQLPPGYQPPNLAISTLYWKAWPLLLVAAFNPENIGLAAWEEYPTLKMLMEMV
 MTNNYSYPPCTLTDEETREMLNRELQTAQREKQEILAFEGHLAAASTKQTITESSLLLSQLTSLDPQG
 PPRRPPPHILDQVKSLSLRLGLHLLCRSRNPDFLLHIIQRQASSQSPWLADLVQSSEGLDVLVQVCL
 CEFLLDHDAVDDAASGEEDDEGESKEQKAKKRQRQKQKQRLGRLQDLLLLGPKADEQTTCEVLDYFLRRLG
 SSQVASRVLAMKGLSLVLESESLRDGEEKEPPMEEDVGD TDVLQGYQWLLRDLPRPLFDVSRSTALAL
 QQAIHMETDPQTISAYLIYLSQHTPVEEQAQHSDLALDVARLVVERSTIMSHLFSKLSPSAASDAVLSAL
 LSIFSRVRRMRQSKEGEEVYSWSESQDQVFLRWSSGETATMHILVHAMVILLTGPPRADDSEFQALL
 DIWFPEEKPLPTAFLVDTSEEALLLPDWLKLRMIRSEVLRLVDAALQDLEPQQLLLFVQSFQIPVSSMSK
 LLQFLDQAVAHDPQTLEQNIMDKNYMAHLVEVQHERGASGGQTFHSLLTASLPPRRDSTEAPKPKSSPEQ
 PIGQGRRIRVGTQLRVLGPEDDLAGMFLQIFPLSPDPRWQSSSPRVALALQQALGQELARVVQGSPEVPG
 ITVRVLQALATLLSSPHGGALVMSMHRSHFLACPLLRQLCQYQRCVQDTGFSSFLKVLQMLQWLDSP
 GVEGGPLRAQLRMLASQASAGRRLSDVRGGLLRALAEALFRQDLEVSSTVRAVIATLRSGEQCSVEPDL
 ISKVLQGLIEVRSPHLEELLTAFFSATADAASFPACKPVVVVSSLLQEEEP LAGGKPGADGGSLEAVR
 LGPSSGLLDWLEMLDPEVSSCPDLQLRLLFSRRKGGKQAQVPSFRPYLLTFTHQSSWPTLHQ CIRVL
 LGKSREQRFDPSASLDFLWACIHVPRIWQGRDQRTQKRREELVLRVQGP ELISLVELILAEAE TRSQDG
 DTAACSLIQARLPLLLSCCCGDESVRKVTEHLSGCIQQWGDSVLGRRCRDLLLQLYLQRP ELRVPVPEV
 LLHSEGAASSVCKLDGLIHRFITLLADTSDSRALENRGADASMACRKLAVAHPLLLLRHLPMIAALLHG
 RTHLNFQEFRQQNHLSCFLHVLGELLELP HVFRSEHQ GALWDCLLSFIRLLLNYRKS SRHLAAFINKFV
 QFIHKYITYNAPAAISFLQKHADPLHDLSFDNSDLVMLKSLLAGLSLPSRDDRTDRGLDEEGEEESSAGS
 LPLVSVSLFTPLTAAEMAPYMKRLSRGQTVEDLLEVLSDIDEMSRRRPEILSFFSTNLQRLMSSAAEECCR
 NLAFLSLALRSMQNSPSIAAFLPTFMYCLGSQDFEVQ TALRNLP EYALLCQEHA AVLLHRAFLVGMYGQ
 MDPSAQISEALRILHMEAVM

TRTRPLEQKLISEEDLAANDILDYKDDDDKV

Tag: C-Myc/DDK
Predicted MW: 244.1 kDa
Concentration: >0.05 µg/µL as determined by microplate BCA method
Purity: > 80% as determined by SDS-PAGE and Coomassie blue staining

Buffer:	25 mM Tris-HCl, 100 mM glycine, pH 7.3, 10% glycerol
Preparation:	Recombinant protein was captured through anti-DDK affinity column followed by conventional chromatography steps.
Note:	For testing in cell culture applications, please filter before use. Note that you may experience some loss of protein during the filtration process.
Storage:	Store at -80°C.
Stability:	Stable for 12 months from the date of receipt of the product under proper storage and handling conditions. Avoid repeated freeze-thaw cycles.
RefSeq:	NP_001073922
Locus ID:	26173
UniProt ID:	Q8N201
RefSeq Size:	7000
Cytogenetics:	7p22.3
RefSeq ORF:	6570
Synonyms:	INT1; NDCAGF; NET28
Summary:	INTS1 is a subunit of the Integrator complex, which associates with the C-terminal domain of RNA polymerase II large subunit (POLR2A; MIM 180660) and mediates 3-prime end processing of small nuclear RNAs U1 (RNU1; MIM 180680) and U2 (RNU2; MIM 180690) (Baillat et al., 2005 [PubMed 16239144]).[supplied by OMIM, Mar 2008]

Product images:



Coomassie blue staining of purified INTS1 protein (Cat# TP317456). The protein was produced from HEK293T cells transfected with INTS1 cDNA clone (Cat# [RC217456]) using MegaTran 2.0 (Cat# [TT210002]).