

Product datasheet for TP317447

HFE (NM_000410) Human Recombinant Protein

Product data:

Product Type:	Recombinant Proteins
Description:	Recombinant protein of human hemochromatosis (HFE), transcript variant 1, 20 µg
Species:	Human
Expression Host:	HEK293T
Expression cDNA Clone or AA Sequence:	>RC217447 representing NM_000410 Red =Cloning site Green =Tags(s)
	<p>MGPRARPALLLLMLLQTAVLQGRLLRSHSLHYLFMGASEQDLGLSLFEALGYVDDQLFVFDHESRRVEP RTPWVSSRISSQMWLQLSLSKLGWDHMFTVDFWTIMENHNHNSKESHTLQVILGCEMQEDNSTEGYWKYGY DGQDHLEFCPDTLDWRAAEPRAWPTKLEWERHKIRARQNRAYLERDCPAQLQQLLELGRGVLDQQVPLV KVTHHTSSVTTLRCRALNYPQNITMKWLKDKQPMDAKEFEPKDVLPNGDGTYYQGWITLAVPPGEEQRY TCQVEHPGLDQPLIWIWEPSPSGTLVIGVISGIAVFFVILFIGILFIILRKRQGSRGAMGHYVLAERE</p> <p>TRTRPLEQKLISEEDLAANDILDYKDDDDKV</p>
Tag:	C-Myc/DDK
Predicted MW:	37.7 kDa
Concentration:	>0.05 µg/µL as determined by microplate BCA method
Purity:	> 80% as determined by SDS-PAGE and Coomassie blue staining
Buffer:	25 mM Tris-HCl, 100 mM glycine, pH 7.3, 10% glycerol
Preparation:	Recombinant protein was captured through anti-DDK affinity column followed by conventional chromatography steps.
Note:	For testing in cell culture applications, please filter before use. Note that you may experience some loss of protein during the filtration process.
Storage:	Store at -80°C.
Stability:	Stable for 12 months from the date of receipt of the product under proper storage and handling conditions. Avoid repeated freeze-thaw cycles.
RefSeq:	<u>NP_000401</u>
Locus ID:	3077



[View online »](#)

UniProt ID: [Q30201](#)

RefSeq Size: 2727

Cytogenetics: 6p22.2

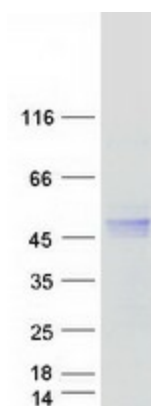
RefSeq ORF: 1044

Synonyms: HFE1; HH; HLA-H; MVCD7; TFQTL2

Summary: The protein encoded by this gene is a membrane protein that is similar to MHC class I-type proteins and associates with beta2-microglobulin (beta2M). It is thought that this protein functions to regulate iron absorption by regulating the interaction of the transferrin receptor with transferrin. The iron storage disorder, hereditary haemochromatosis, is a recessive genetic disorder that results from defects in this gene. At least nine alternatively spliced variants have been described for this gene. Additional variants have been found but their full-length nature has not been determined. [provided by RefSeq, Jul 2008]

Protein Families: Druggable Genome, Transmembrane

Product images:



Coomassie blue staining of purified HFE protein (Cat# TP317447). The protein was produced from HEK293T cells transfected with HFE cDNA clone (Cat# [RC217447]) using MegaTran 2.0 (Cat# [TT210002]).