

## Product datasheet for **TP317403M**

### Salivary alpha amylase (AMY1A) (NM\_004038) Human Recombinant Protein

#### Product data:

|                                       |   |
|---------------------------------------|---|
| Product Type:                         | Recombinant Proteins  |
| Description:                          | Recombinant protein of human amylase, alpha 1A (salivary) (AMY1A), transcript variant 1, 100 µg   |
| Species:                              | Human   |
| Expression Host:                      | HEK293T   |
| Expression cDNA Clone or AA Sequence: | >RC217403 representing NM_004038<br><b>Red</b> =Cloning site <b>Green</b> =Tags(s)  |
|                                       | <p>MKLFWLLFTIGFCWAQYSSNTQQGRTSIVHLFEWRWVDIALECERYLAPKGFGGVQVSPNENVAIHNPFRPWWERYQPVSYLCTRSGNEDEFNMVTRCANNVGVRIYVDAVINHMCGNAVSAGTSSTCGSYFNPGSRD<br/>FPAVPYSGWDFNDGKCKTGSGDIENYNDATQVRDCRLSGLLDLALGKDYVRSKIAEYMNHLIDIGVAGFR<br/>IDASKHMPGDIKAILDKLHNLNSNWFPEGSKPFIYQEVIDLGGEPIKSSDYFGNGRVTEFKYGAKLGTV<br/>IRKWNGEKMSYLKNWGEWGFMPSDRALVFVDNHDNQRGHGAGGASILTFWDARLYKMAVGFMLAHPYGF<br/>TRVMSSYRWPRYFENGKDVNDWVGPPNDNGVTKEVTINPDTCGNDWVCEHRWRQIRNMVNFNRNVVDGQP<br/>FTNWDYDNGSNQVAFGRGNRGFIVFNDDWTFSLTLQTGLPAGTYCDVISGDKINGNCTGIKIYVSSDDGKA<br/>HFSISNSAEDPFIAIHAESKL</p> <p><b>TRTRPLEQKLISEEDLAANDILDYKDDDDKV</b></p> |
| Tag:                                  | C-Myc/DDK   |
| Predicted MW:                         | 55.9 kDa  |
| Concentration:                        | >0.05 µg/µL as determined by microplate BCA method  |
| Purity:                               | > 80% as determined by SDS-PAGE and Coomassie blue staining   |
| Buffer:                               | 25 mM Tris-HCl, 100 mM glycine, pH 7.3, 10% glycerol  |
| Preparation:                          | Recombinant protein was captured through anti-DDK affinity column followed by conventional chromatography steps.  |
| Note:                                 | For testing in cell culture applications, please filter before use. Note that you may experience some loss of protein during the filtration process.  |
| Storage:                              | Store at -80°C.   |
| Stability:                            | Stable for 12 months from the date of receipt of the product under proper storage and handling conditions. Avoid repeated freeze-thaw cycles.   |



[View online »](#)

RefSeq: [NP\\_004029](#)

Locus ID: 276

UniProt ID: [P04745, Q6NSB3](#)

RefSeq Size: 1862

Cytogenetics: 1p21.1

RefSeq ORF: 1533

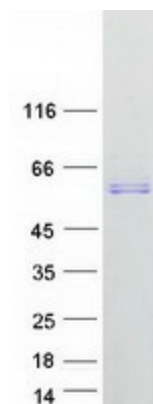
Synonyms: AMY1

**Summary:** Amylases are secreted proteins that hydrolyze 1,4-alpha-glucoside bonds in oligosaccharides and polysaccharides, and thus catalyze the first step in digestion of dietary starch and glycogen. The human genome has a cluster of several amylase genes that are expressed at high levels in either salivary gland or pancreas. This gene encodes an amylase isoenzyme produced by the salivary gland. Alternative splicing results in multiple transcript variants encoding the same protein. [provided by RefSeq, Jul 2008]

**Protein Families:** ES Cell Differentiation/IPS, Secreted Protein

**Protein Pathways:** Metabolic pathways, Starch and sucrose metabolism

### Product images:



Coomassie blue staining of purified AMY1A protein (Cat# [TP317403]). The protein was produced from HEK293T cells transfected with AMY1A cDNA clone (Cat# [RC217403]) using MegaTran 2.0 (Cat# [TT210002]).