

Product datasheet for **TP317403**

Salivary alpha amylase (AMY1A) (NM_004038) Human Recombinant Protein

Product data:

Product Type:	Recombinant Proteins
Description:	Recombinant protein of human amylase, alpha 1A (salivary) (AMY1A), transcript variant 1, 20 µg
Species:	Human
Expression Host:	HEK293T
Expression cDNA Clone or AA Sequence:	>Peptide sequence encoded by RC217403 Blue=ORF Red=Cloning site Green=Tag(s)

MKLFWLLFTIGFCWAQYSSNTQQGRTSIVHLFEWRWVDIALECERYLAPKGFQVSPNENVAIHNP
FRPWWERYQPVSYKLCTRSNGNEDEFNMVTRCANNVGVRIYVDAVINHMCNAVSAGTSSTCGSYFNPGS
RDFPAVPYSGWDFNDGKCKTGSGDIENYNDATQVRDCRLSGLLDLALGKDYVRSKIAEYMNHLIDIGVA
GFRIDASKHMWPGDIKAILDKLHNLNSNWFPEGSKPFIYQEVIDLGGEPIKSSDYFGNGRVTEFKYGAK
LGTVIRKWNGEKMSYLKNWGEWGFMPSPDRALVFDNHDNQRGHGAGGASILTFWDARLYKMAVGF
MLA
HPYGFTRVMSSYRWPYFENGKDVNDWVGPPNDNGVTKEVTINPDTTGNDWVCEHRWRQIRNMVN
FRN
VVDGQPFTNWDNGSNQVAFGRGNRGFIVFNDDWTFSLTLQTGLPAGTYCDVISGDKINGNCTGIKIY
VSDDGKAHFSISNSAEDPFIAIHAESKL
TRTRPLEQKLISEEDLAANDILDYKDDDDKV

Recombinant protein using RC217403 also available, [TP317403](#)

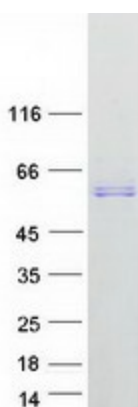
Tag:	C-Myc/DDK
Predicted MW:	55.9 kDa
Concentration:	>0.05 µg/µL as determined by microplate BCA method
Purity:	> 80% as determined by SDS-PAGE and Coomassie blue staining
Buffer:	25 mM Tris-HCl, 100 mM glycine, pH 7.3, 10% glycerol
Preparation:	Recombinant protein was captured through anti-DDK affinity column followed by conventional chromatography steps.
Note:	For testing in cell culture applications, please filter before use. Note that you may experience some loss of protein during the filtration process.



[View online »](#)

Storage:	Store at -80°C.
Stability:	Stable for 12 months from the date of receipt of the product under proper storage and handling conditions. Avoid repeated freeze-thaw cycles.
RefSeq:	NP_004029
Locus ID:	276
UniProt ID:	P04745
RefSeq Size:	1862
Cytogenetics:	1p21.1
RefSeq ORF:	1533
Synonyms:	AMY1
Summary:	Amylases are secreted proteins that hydrolyze 1,4-alpha-glucoside bonds in oligosaccharides and polysaccharides, and thus catalyze the first step in digestion of dietary starch and glycogen. The human genome has a cluster of several amylase genes that are expressed at high levels in either salivary gland or pancreas. This gene encodes an amylase isoenzyme produced by the salivary gland. Alternative splicing results in multiple transcript variants encoding the same protein. [provided by RefSeq, Jul 2008]
Protein Families:	ES Cell Differentiation/IPS, Secreted Protein
Protein Pathways:	Metabolic pathways, Starch and sucrose metabolism

Product images:



Coomassie blue staining of purified AMY1A protein (Cat# TP317403). The protein was produced from HEK293T cells transfected with AMY1A cDNA clone (Cat# [RC217403]) using MegaTran 2.0 (Cat# [TT210002]).