

## Product datasheet for TP317387L

### ITGB6 (NM\_000888) Human Recombinant Protein

#### Product data:

Product Type:	Recombinant Proteins
Description:	Recombinant protein of human integrin, beta 6 (ITGB6), 1 mg
Species:	Human
Expression Host:	HEK293T
Expression cDNA Clone or AA Sequence:	>RC217387 representing NM_000888 Red=Cloning site Green=Tags(s)

MGIELLCLFFLFLGRNDHVQGGCALGGAETCEDCLLIGPQCAWCAQENFTHPSGVGERCDTPANLLAKGC  
QLNFIENPVSQVEILKNKPLSVGRQKNSSDIVQIAPQSLILKLRPGGAQTLQVHVRQTEDYPVDLYYLM  
LSASMDLNTIKELGSRLSKEMSKLTSNFRLLGFGSFVEKPVSPFVKTTPEEIANPCSSIPYFCLPTFGF  
KHILPLTND AERFNEIVKNQKISANIDTPEGGFDAIMQAAVCKEKIGWRNDSLHLLVFSVDADSHFGMDS  
KLAGIVIPNDGLCHLDSKNEYSMSTVLEYPTIGQLIDKLVQNNVLLIFAVTQE QVHLYENYAKLIPGATV  
GLLQKDSGNILQLIISAYEELRSEVEVLGDTEGLNLSFTAICNNGTLFQHQQKCSHMKVGD TASFSVT  
VNIPH CERRSRHIIKPVGLGDALELLVSPENCDCQKEVEVNSSKCHHNGSFCQCGVCACHPGHMGPRC  
ECGEDMLSTDSCKEAPDHPSCSGRGDCYCGQCICHLSPYGNIIYGPYCQCDNFSCVRHKGLLCGGNGDCDC  
GECVCRSGWTGEYCNCCTTSTDSCVSEDGVLCSGRGDCVCGKCVCTNPGASGPTCERCPTCGDPCNSKRSC  
IECHLSAAGQAREECVDKCKLAGATISEEEDFSKDGVSVC SLQGENECLITFLITTDNEGKTIHSINEK  
DCPKPPNIPMIMLGVSLAAILLIGVLLCIWKLVSFHDRKEVAKFEAERSKAKWQTGTNPLYRGSTSTFK  
NVTYKHREKQKVDLSTDC

TRTRPLEQKLISEEDLAANDILDYKDDDDKV

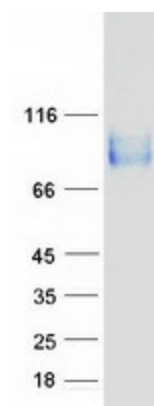
Tag:	C-Myc/DDK
Predicted MW:	85.8 kDa
Concentration:	>0.05 µg/µL as determined by microplate BCA method
Purity:	> 80% as determined by SDS-PAGE and Coomassie blue staining
Buffer:	25 mM Tris-HCl, 100 mM glycine, pH 7.3, 10% glycerol
Preparation:	Recombinant protein was captured through anti-DDK affinity column followed by conventional chromatography steps.
Note:	For testing in cell culture applications, please filter before use. Note that you may experience some loss of protein during the filtration process.



[View online »](#)

<b>Storage:</b>	Store at -80°C.
<b>Stability:</b>	Stable for 12 months from the date of receipt of the product under proper storage and handling conditions. Avoid repeated freeze-thaw cycles.
<b>RefSeq:</b>	<a href="#">NP_000879</a>
<b>Locus ID:</b>	3694
<b>UniProt ID:</b>	<a href="#">P18564</a>
<b>RefSeq Size:</b>	2397
<b>Cytogenetics:</b>	2q24.2
<b>RefSeq ORF:</b>	2364
<b>Synonyms:</b>	AI1H
<b>Summary:</b>	This gene encodes a protein that is a member of the integrin superfamily. Members of this family are adhesion receptors that function in signaling from the extracellular matrix to the cell. Integrins are heterodimeric integral membrane proteins composed of an alpha chain and a beta chain. The encoded protein forms a dimer with an alpha v chain and this heterodimer can bind to ligands like fibronectin and transforming growth factor beta 1. Alternate splicing results in multiple transcript variants. [provided by RefSeq, Sep 2013]
<b>Protein Families:</b>	Druggable Genome, Transmembrane
<b>Protein Pathways:</b>	Arrhythmogenic right ventricular cardiomyopathy (ARVC), Dilated cardiomyopathy, ECM-receptor interaction, Focal adhesion, Hypertrophic cardiomyopathy (HCM), Regulation of actin cytoskeleton

### Product images:



Coomassie blue staining of purified ITGB6 protein (Cat# [TP317387]). The protein was produced from HEK293T cells transfected with ITGB6 cDNA clone (Cat# [RC217387]) using MegaTran 2.0 (Cat# [TT210002]).