

Product datasheet for TP317354L

DNA polymerase eta (POLH) (NM_006502) Human Recombinant Protein

Product data:

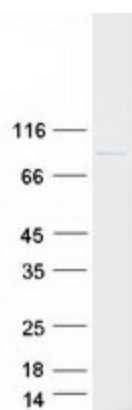
Product Type:	Recombinant Proteins
Description:	Recombinant protein of human polymerase (DNA directed), eta (POLH), 1 mg
Species:	Human
Expression Host:	HEK293T
Expression cDNA Clone or AA Sequence:	>RC217354 representing NM_006502 Red=Cloning site Green=Tags(s)
	<p>MATGQDRVVALVDMDCFFVQVEQRQNPHLRNKPCAVVQYKSWKGGGIIAVSYEARAFGVTRSMWADDAKK LCPDLLLAQVRESRGKANLTKYREASVEVMEIMSRFAVIERASIDEAYVDLTSAVQERLQKLQGQPISAD LLPSTYIEGLPQGPTTAEETVQKEGMRKQGLFQWLDSLQIDNLTSPDLQLTVGAVIVEEMRAAIERETGF QCSAGISHNKVLAKLACGLNKPNRQTLVSHGSVPQLFSQMPIRKIRSLGGKLGASVIEILGIEYMGELTQ FTESQLQSHFGEKNGSWLYAMCRGIEHDPVKPRQLPKTIGCSKNFPGKTALATREQVQWWLLQLAQELEE RLTKDRNDNDRVATQLVVSIRVQGDKRLSSLRCCALTRYDAHKMSHDAFTVIKNCNTSGIQTEWSPPLT MLFLCATKFSASAPSSSTDITSFLSSDPSSLPKVPVTSSEAKTQGSQPAVTATKKATTSLEFFQAAER QKVKEASLSSLTAPTQAPMSNSPSKPSLPFQTSQSTGTEPFKQKSLLLKQKQLNNSVSSPQQNPWSNC KALPNSLPTEYPGCVPVCEGVSKLEESSKATPAEMDLAHSQSMHASSASKSVLEVTQKATPNPSSLAAE DQVPCEKCGSLVPVWDMPEHMDYHFALELQKSFLQPHSSNPQVSAVSHQGKRNPKSPLACTNKRPRPEG MQTLESFFKPLTH</p> <p>TRTRPLEQKLISEEDLAANDILDYKDDDDKV</p>
Tag:	C-Myc/DDK
Predicted MW:	78.2 kDa
Concentration:	>0.05 µg/µL as determined by microplate BCA method
Purity:	> 80% as determined by SDS-PAGE and Coomassie blue staining
Buffer:	25 mM Tris-HCl, 100 mM glycine, pH 7.3, 10% glycerol
Preparation:	Recombinant protein was captured through anti-DDK affinity column followed by conventional chromatography steps.
Note:	For testing in cell culture applications, please filter before use. Note that you may experience some loss of protein during the filtration process.
Storage:	Store at -80°C.



[View online »](#)

Stability:	Stable for 12 months from the date of receipt of the product under proper storage and handling conditions. Avoid repeated freeze-thaw cycles.
RefSeq:	NP_006493
Locus ID:	5429
UniProt ID:	Q9Y253 , A0A024RD62
RefSeq Size:	3464
Cytogenetics:	6p21.1
RefSeq ORF:	2139
Synonyms:	RAD30; RAD30A; XP-V; XPV
Summary:	This gene encodes a member of the Y family of specialized DNA polymerases. It copies undamaged DNA with a lower fidelity than other DNA-directed polymerases. However, it accurately replicates UV-damaged DNA; when thymine dimers are present, this polymerase inserts the complementary nucleotides in the newly synthesized DNA, thereby bypassing the lesion and suppressing the mutagenic effect of UV-induced DNA damage. This polymerase is thought to be involved in hypermutation during immunoglobulin class switch recombination. Mutations in this gene result in XPV, a variant type of xeroderma pigmentosum. Several transcript variants encoding different isoforms have been found for this gene. [provided by RefSeq, May 2014]
Protein Families:	Druggable Genome

Product images:



Coomassie blue staining of purified POLH protein (Cat# [TP317354]). The protein was produced from HEK293T cells transfected with POLH cDNA clone (Cat# [RC217354]) using MegaTran 2.0 (Cat# [TT210002]).