

## Product datasheet for TP317329L

### TOMM20L (NM\_207377) Human Recombinant Protein

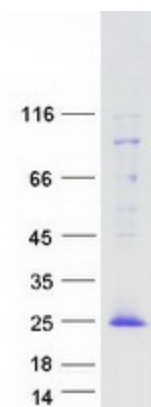
#### Product data:

Product Type:	Recombinant Proteins
Description:	Recombinant protein of human translocase of outer mitochondrial membrane 20 homolog (yeast)-like (TOMM20L), nuclear gene encoding mitochondrial protein, 1 mg
Species:	Human
Expression Host:	HEK293T
Expression cDNA Clone or AA Sequence:	>RC217329 representing NM_207377 <b>Red</b> =Cloning site <b>Green</b> =Tags(s)
	MPSVRSLLRLLAAAAACGAF AFLGYCIYLNRRRGDPAFKRRLRDKRRAEPQKAE EQGTQLWDPTKNKKL QELFLQEV RMGELWLSRGEHRMGIQH LGNALLVCEQPRELLKVFKHTLPPKVFEMLLHKIPLICQQFEAD MNEQDCLEDDPD
	<b>SGPTRRRLEQKLISEEDLAANDILDYKDDDDKV</b>
Tag:	C-Myc/DDK
Predicted MW:	17.5 kDa
Concentration:	>0.05 µg/µL as determined by microplate BCA method
Purity:	> 80% as determined by SDS-PAGE and Coomassie blue staining
Buffer:	25 mM Tris-HCl, 100 mM glycine, pH 7.3, 10% glycerol
Preparation:	Recombinant protein was captured through anti-DDK affinity column followed by conventional chromatography steps.
Note:	For testing in cell culture applications, please filter before use. Note that you may experience some loss of protein during the filtration process.
Storage:	Store at -80°C.
Stability:	Stable for 12 months from the date of receipt of the product under proper storage and handling conditions. Avoid repeated freeze-thaw cycles.
RefSeq:	<a href="#">NP_997260</a>
Locus ID:	387990
UniProt ID:	<a href="#">Q6UXN7</a>



[View online »](#)

RefSeq Size:	622
Cytogenetics:	14q23.1
RefSeq ORF:	456
Synonyms:	UNQ9438
Protein Families:	Druggable Genome, Transmembrane

**Product images:**

Coomassie blue staining of purified TOMM20L protein (Cat# [TP317329]). The protein was produced from HEK293T cells transfected with TOMM20L cDNA clone (Cat# [RC217329]) using MegaTran 2.0 (Cat# [TT210002]).