

Product datasheet for TP317328M

SERCA3 (ATP2A3) (NM_174953) Human Recombinant Protein

Product data:

Product Type:	Recombinant Proteins
Description:	Recombinant protein of human ATPase, Ca ⁺⁺ transporting, ubiquitous (ATP2A3), transcript variant 5, 100 µg
Species:	Human
Expression Host:	HEK293T
Expression cDNA Clone or AA Sequence:	>RC217328 representing NM_174953 Red=Cloning site Green=Tags(s)

MEAAHLLPAADVLRHFSVTAEGGLSPAQVTGARERYGPNELPSEEGKSLWELVLEQFEDLLVRILLAL
VSFVLAWFEEGETTTAFVEPLVIMLILVANAIVGVWQERNAESAIEALKEYEPEMGKVIKSDRKGVQRI
RARDIVPGDIVEVAVGDKVPADLRLIEIKSTTLRVDQSILTGESVSVTKHTEAIPDPRAVNQDKKNMLFS
GTNITSGKAVGVAVATGLHTELKIRSQMAAVEPERTPLQRKLDEFGRQLSHAISVICVAVWVINIGHFA
DPAHGGSWLRGAVYYFKIAVALAVAAIPEGLPAVITTCALGTTRMARKNAIVRSLPSVETLGCTSVICS
DKTGTLTTNQMSVCRMVVAEADAGSCLLHEFTISGTTYTPEGEVRQGDQPVRRCGQFDGLVELATICALC
NDSALDYNEAKGVYKVGAEATETALTCLVEKMNVDLTLQALSVERAGACNTVIKQLMRKEFTLEFSRD
RKSMSVYCTPTRPHPTGQGSKMFVKGAPESVIERCSSVRVGSRTAPLTPSREQILAKIRDWGGSDTLR
CLALATRDAPPRKEDMELDDCSKQVYETDLTFVGCVMGLDPPRPEVAACITRCYQAGIRVVMITGDNKG
TAVAICRRLGIFGDTEVAGKAYTGREFDDLSPEQQRQACRTARCFARVEPAHKSRIVENLQSFNEITAM
TGDGVNDAPALKKAEIGIAMSGTAVAKSAAEMVLSDDNFASIVAAVEEGRAIYSNMKQFIRYLISNVG
EVCIFLTAILGLPEALIPVQLLWVNLVTDGLPATALGFNPPDLIMEKLRSPREALISGWLFFRYLAI
GVYVGLATVAAATWWFVYDAEGPHINFYQLRNFLKCEDNPLFAGIDCEVFESRFPTTMALSVLVTIEMC
NALNSVSENQSLLRMPPWMNPWLLVAVAMSMALHFLILLVPPLPLIFQVTPLSGRQWVWLQISLPVILL
DEALKYLSRNHMHACLYPGLLRTVSQAWSRQPLTTSWTPDHTGLASLGGHSHIVSLSELLREGGSREEMS
QK

TRTRPLEQKLISEEDLAANDILDYKDDDDKV

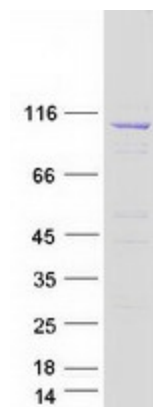
Tag:	C-Myc/DDK
Predicted MW:	114.8 kDa
Concentration:	>0.05 µg/µL as determined by microplate BCA method
Purity:	> 80% as determined by SDS-PAGE and Coomassie blue staining
Buffer:	25 mM Tris-HCl, 100 mM glycine, pH 7.3, 10% glycerol



[View online »](#)

Preparation:	Recombinant protein was captured through anti-DDK affinity column followed by conventional chromatography steps.
Note:	For testing in cell culture applications, please filter before use. Note that you may experience some loss of protein during the filtration process.
Storage:	Store at -80°C.
Stability:	Stable for 12 months from the date of receipt of the product under proper storage and handling conditions. Avoid repeated freeze-thaw cycles.
RefSeq:	NP_777613
Locus ID:	489
UniProt ID:	Q93084 , A8K9K1
RefSeq Size:	4857
Cytogenetics:	17p13.2
RefSeq ORF:	3156
Synonyms:	SERCA3
Summary:	This gene encodes one of the SERCA Ca(2+)-ATPases, which are intracellular pumps located in the sarcoplasmic or endoplasmic reticula of muscle cells. This enzyme catalyzes the hydrolysis of ATP coupled with the translocation of calcium from the cytosol to the sarcoplasmic reticulum lumen, and is involved in calcium sequestration associated with muscular excitation and contraction. Alternative splicing results in multiple transcript variants encoding different isoforms. [provided by RefSeq, Jul 2008]
Protein Families:	Druggable Genome, Transmembrane
Protein Pathways:	Alzheimer's disease, Calcium signaling pathway

Product images:



Coomassie blue staining of purified ATP2A3 protein (Cat# [TP317328]). The protein was produced from HEK293T cells transfected with ATP2A3 cDNA clone (Cat# [RC217328]) using MegaTran 2.0 (Cat# [TT210002]).