

## Product datasheet for **TP317328**

### SERCA3 (ATP2A3) (NM\_174953) Human Recombinant Protein

#### Product data:

Product Type:	Recombinant Proteins
Description:	Recombinant protein of human ATPase, Ca <sup>++</sup> transporting, ubiquitous (ATP2A3), transcript variant 5, 20 µg
Species:	Human
Expression Host:	HEK293T
Expression cDNA Clone or AA Sequence:	>RC217328 representing NM_174953 <b>Red</b> =Cloning site <b>Green</b> =Tags(s)

MEAAHLLPAADVLRHFSVTAEGGLSPAQVTGARERYGPNELPSEEGKSLWELVLEQFEDLLVRILLAL  
VSFVLAWFEEGETTTAFVEPLVIMLILVANAIVGVWQERNAESAIEALKEYEPEMGKVIKSDRKGVQRI  
RARDIVPGDIVEVAVGDKVPADLRLIEIKSTTLRVDQSILTGESVSVTKHTEAIPDPRAVNQDKKNMLFS  
GTNITSGKAVGVAVATGLHTELKIRSQMAAVEPERTPLQRKLDEFGRQLSHAISVICVAVWVINIGHFA  
DPAHGGSWLRGAVYYFKIAVALAVAAIPEGLPAVITTCALGTTRRMARKNAIVRSLPSVETLGCTSVICS  
DKTGTLTTNQMSVCRMVVAEADAGSCLLHEFTISGTTYTPEGEVRQGDQPVRRCGQFDGLVELATICALC  
NDSALDYNEAKGVYKVGAEATETALTCLVEKMNVDLTDLQALSRVERAGACNTVIKQLMRKEFTLEFSRD  
RKSMVYCTPTRPHPTGQGSKMFVKGAPESVIERCSSVRVGSRTAPLTPTSREQILAKIRDWGGSDTLR  
CLALATRDAPPRKEDMELDDCSKQVYETDLTFVGCVMGLDPPRPEVAACITRCYQAGIRVVMITGDNKG  
TAVAICRRLGIFGDTEVAGKAYTGREFDDLSPEQQRQACRTARCFARVEPAHKSRIVENLQSFNEITAM  
TGDGVNDAPALKKAEIGIAMSGTAVAKSAAEMVLSDDNFASIVAAVEEGRAIYSNMKQFIRYLISNVG  
EVCIFLTAILGLPEALIPVQLLWVNLVTDGLPATALGFNPPDLIMEKLRSPREALISGWLFFRYLAI  
GVYVGLATVAAATWWFVYDAEGPHINFYQLRNFLKCEDNPLFAGIDCEVFESRFPTTMALSVLVTIEMC  
NALNSVSENQSLLRMPPWMNPWLLVAVAMSMALHFLILLVPPLPLIFQVTPLSGRQWVWLQISLPVILL  
DEALKYLSRNHMHACLYPGLLRVTSQAWSRQPLTTSWTPDHTGLASLGGHSHIVSLSELLREGGSREEMS  
QK

**TR**TRPLEQKLISEEDLAANDILDYKDDDDKV

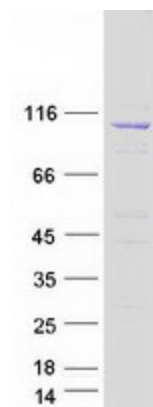
Tag:	C-Myc/DDK
Predicted MW:	114.8 kDa
Concentration:	>0.05 µg/µL as determined by microplate BCA method
Purity:	> 80% as determined by SDS-PAGE and Coomassie blue staining
Buffer:	25 mM Tris-HCl, 100 mM glycine, pH 7.3, 10% glycerol



[View online »](#)

<b>Preparation:</b>	Recombinant protein was captured through anti-DDK affinity column followed by conventional chromatography steps.
<b>Note:</b>	For testing in cell culture applications, please filter before use. Note that you may experience some loss of protein during the filtration process.
<b>Storage:</b>	Store at -80°C.
<b>Stability:</b>	Stable for 12 months from the date of receipt of the product under proper storage and handling conditions. Avoid repeated freeze-thaw cycles.
<b>RefSeq:</b>	<a href="#">NP_777613</a>
<b>Locus ID:</b>	489
<b>UniProt ID:</b>	<a href="#">Q93084</a> , <a href="#">A8K9K1</a>
<b>RefSeq Size:</b>	4857
<b>Cytogenetics:</b>	17p13.2
<b>RefSeq ORF:</b>	3156
<b>Synonyms:</b>	SERCA3
<b>Summary:</b>	This gene encodes one of the SERCA Ca(2+)-ATPases, which are intracellular pumps located in the sarcoplasmic or endoplasmic reticula of muscle cells. This enzyme catalyzes the hydrolysis of ATP coupled with the translocation of calcium from the cytosol to the sarcoplasmic reticulum lumen, and is involved in calcium sequestration associated with muscular excitation and contraction. Alternative splicing results in multiple transcript variants encoding different isoforms. [provided by RefSeq, Jul 2008]
<b>Protein Families:</b>	Druggable Genome, Transmembrane
<b>Protein Pathways:</b>	Alzheimer's disease, Calcium signaling pathway

### Product images:



Coomassie blue staining of purified ATP2A3 protein (Cat# TP317328). The protein was produced from HEK293T cells transfected with ATP2A3 cDNA clone (Cat# [RC217328]) using MegaTran 2.0 (Cat# [TT210002]).