

## Product datasheet for **TP317269M**

### C Reactive Protein (CRP) (NM\_000567) Human Recombinant Protein

#### Product data:

Product Type:	Recombinant Proteins
Description:	Recombinant protein of human C-reactive protein, pentraxin-related (CRP), 100 µg
Species:	Human
Expression Host:	HEK293T
Expression cDNA Clone or AA Sequence:	>RC217269 protein sequence <b>Red</b> =Cloning site <b>Green</b> =Tags(s)
	<p>MEKLLCFLVLTSLSHAFGQTDMSRKAFVFPKESDTSYVSLKAPLTKPLKAFTVCLHFYTELSSTRGYSIF SYATKRQDNEILIFWSKDIGYSFTVGGSEILFEVPEVTVAPVHICTSWESASGIVEFWVDGKPRVRKSLK KGYTVGAEASIIILGQEQDSFGGNFEGSQSLVGDIGNVNMWDFVLSPEINTIYLGPFSPNVLNWRALKY EVQGEVFTKPQLWP</p> <p><b>TRTRPLEQKLISEEDLAANDILDYKDDDDKV</b></p>
Tag:	C-Myc/DDK
Predicted MW:	23 kDa
Concentration:	>0.05 µg/µL as determined by microplate BCA method
Purity:	> 80% as determined by SDS-PAGE and Coomassie blue staining
Buffer:	25 mM Tris-HCl, 100 mM glycine, pH 7.3, 10% glycerol
Preparation:	Recombinant protein was captured through anti-DDK affinity column followed by conventional chromatography steps.
Note:	For testing in cell culture applications, please filter before use. Note that you may experience some loss of protein during the filtration process.
Storage:	Store at -80°C.
Stability:	Stable for 12 months from the date of receipt of the product under proper storage and handling conditions. Avoid repeated freeze-thaw cycles.
RefSeq:	<a href="#">NP_000558</a>
Locus ID:	1401
UniProt ID:	<a href="#">P02741</a>



[View online »](#)

RefSeq Size: 2024

Cytogenetics: 1q23.2

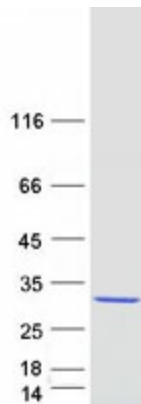
RefSeq ORF: 672

Synonyms: PTX1

**Summary:** The protein encoded by this gene belongs to the pentraxin family which also includes serum amyloid P component protein and pentraxin 3. Pentraxins are involved in complement activation and amplification via communication with complement initiation pattern recognition molecules, but also complement regulation via recruitment of complement regulators. The encoded protein has a calcium dependent ligand binding domain with a distinctive flattened beta-jellyroll structure. It exists in two forms as either a pentamer in circulation or as a nonsoluble monomer in tissues. It is involved in several host defense related functions based on its ability to recognize foreign pathogens and damaged cells of the host and to initiate their elimination by interacting with humoral and cellular effector systems in the blood. Consequently, the level of this protein in plasma increases greatly during acute phase response to tissue injury, infection, or other inflammatory stimuli. Elevated expression of the encoded protein is associated with severe acute respiratory syndrome coronavirus 2 (SARS-CoV-2) infection. [provided by RefSeq, Aug 2020]

**Protein Families:** Secreted Protein

### Product images:



Coomassie blue staining of purified CRP protein (Cat# [TP317269]). The protein was produced from HEK293T cells transfected with CRP cDNA clone (Cat# [RC217269]) using MegaTran 2.0 (Cat# [TT210002]).