

Product datasheet for TP317265L

Integrin alpha E (ITGAE) (NM_002208) Human Recombinant Protein

Product data:

Product Type:	Recombinant Proteins
Description:	Recombinant protein of human integrin, alpha E (antigen CD103, human mucosal lymphocyte antigen 1; alpha polypeptide) (ITGAE), 1 mg
Species:	Human
Expression Host:	HEK293T
Expression cDNA Clone or AA Sequence:	>RC217265 representing NM_002208 Red=Cloning site Green=Tags(s)

MWLFHTLLCIASLALLAAFNVDVARPWLTPKGGAPFVLSLLHQDPSTNQTWLLVTSRTRKTRTPGPLHRC
SLVQDEILCHPVEHVPIPKGRHRGVTVVRSHHGVLICIQVLVRRPHSLSELGTGCSLLGPDLRPQAQAN
FFDLENLLDPDARVDTGDCYSNKEGGEDDVNTARQRRALEKEEEEDEEEEEAGTEIAIILDGS
GSIDPPDFQRAKDFISNMMRNFYEKFCFCNFALVQYGGVIQTEFDLRDSQDVMSLARVQNITQVGSVTK
TASAMQHVLDISFTSSHGSRKASKVMVVLTDGGIFEDPLNLTTVINSPKMQGVERFAIGVGEEFKSART
ARELNLIASDPDETHAFKVTNYMALDGLLSKLRNYIISMEGTVDALHYQLAQIGFSAQILDERQVLLGA
VGAFDWSGGALLYDTRRRGRFLNQTAADAAEAQYSYLYGAVAVLHKTCSLSYVAGAPQYKHHGAVF
ELQKEGREASFLPVLEGEQMGSYFGSELCPVDIDMDGSTDFLLVAAPFYHVHGEEGRVYVYRLSEQDGSF
SLARILSGHPGFTNARFGFAMAAMGDLSQDKLTDVAIGAPLEGFGADDGASFGSVYIYNHWDGLSASPS
QRIRASTVAPGLQYFGMSMAGGFDISGDGLADITVGTGQAVVFRSRPVRLKVSMAFTPSALPIGFNGV
VNVRLCFEISSVTTASESGLREALLNFTLDVDVVGKQRRRLQCSQDVRSLGCLREWSSGSQLCEDLLMPT
EGELCEEDCFNSASVKVSYQLQTPEGQTDHPQPILDRTYEPFAIFQLPYEKACKNKLFCVAELQLATTVS
QQELVGLTKELTLNINLTNSGEDSYMMSMALNYPRNLQLKRMQKPPSPNIQCDDPQPVASVLIMNCRIG
HPVLKRSSAHVSVVWQLEENAFPNRTADITVTVTNSNERRSLANETHLQFRHGFVAVLSKPSIMYVNTG
QGLSHHKEFLFHVHGENLFGAEYQLQICVPTKLRGLQVVAVKLLTRTQASTVCTWSQERACAYSSVQHVE
EWHSVSCVIASDKENVTVAEISWDHSEELLKDVTELQILGEISFNKSLYEGLNAENHRTKITVFLKDE
KYHSLPIIIKGSVGGLLVLIVILVILFKCGFFKRKYQQLNLESIRKAQLKSENLLLEEN

TRTRPLEQKLISEEDLAANDILDYKDDDDKV

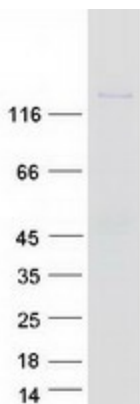
Tag:	C-Myc/DDK
Predicted MW:	128.1 kDa
Concentration:	>0.05 µg/µL as determined by microplate BCA method
Purity:	> 80% as determined by SDS-PAGE and Coomassie blue staining



[View online »](#)

Buffer:	25 mM Tris-HCl, 100 mM glycine, pH 7.3, 10% glycerol
Preparation:	Recombinant protein was captured through anti-DDK affinity column followed by conventional chromatography steps.
Note:	For testing in cell culture applications, please filter before use. Note that you may experience some loss of protein during the filtration process.
Storage:	Store at -80°C.
Stability:	Stable for 12 months from the date of receipt of the product under proper storage and handling conditions. Avoid repeated freeze-thaw cycles.
RefSeq:	NP_002199
Locus ID:	3682
UniProt ID:	P38570
RefSeq Size:	3878
Cytogenetics:	17p13.2
RefSeq ORF:	3537
Synonyms:	CD103; HUMINAE
Summary:	Integrins are heterodimeric integral membrane proteins composed of an alpha chain and a beta chain. This gene encodes an I-domain-containing alpha integrin that undergoes post-translational cleavage in the extracellular domain, yielding disulfide-linked heavy and light chains. In combination with the beta 7 integrin, this protein forms the E-cadherin binding integrin known as the human mucosal lymphocyte-1 antigen. This protein is preferentially expressed in human intestinal intraepithelial lymphocytes (IEL), and in addition to a role in adhesion, it may serve as an accessory molecule for IEL activation. [provided by RefSeq, Jul 2008]
Protein Families:	Druggable Genome, ES Cell Differentiation/IPS, Transmembrane
Protein Pathways:	Regulation of actin cytoskeleton

Product images:



Coomassie blue staining of purified ITGAE protein (Cat# [TP317265]). The protein was produced from HEK293T cells transfected with ITGAE cDNA clone (Cat# [RC217265]) using MegaTran 2.0 (Cat# [TT210002]).

