

Product datasheet for TP317257M

Transmembrane protein 30A (TMEM30A) (NM_018247) Human Recombinant Protein

Product data:

Product Type:	Recombinant Proteins
Description:	Recombinant protein of human transmembrane protein 30A (TMEM30A), transcript variant 1, 100 µg
Species:	Human
Expression Host:	HEK293T
Expression cDNA Clone or AA Sequence:	>RC217257 representing NM_018247 Red=Cloning site Green=Tags(s)

MAMNYNAKDEVDGGPPCAPGGTAKTRRPDNTAFKQQRPLPAWQPILTAGTVLPIFFIIGLIFIPIGIGIFV
TSNNIREIEIDYTGTEPSSPCNKCLSPDVTPCFCTINFTLEKSFEGNVFMYGLSNFYQNHRRYVKSRDD
SQLNGDSSALLNPSKECEPYRRNEDKPIAPCGAIANSFNDTLELFLIGNDSYPIPIALKKKGIAWWTDK
NVKFRNPPGGDNLEERFKGTTKPVNWLKPVYMLDSDPDNNGFINEDFIVWMRTAALPTFRKLYRLIERKS
DLHPTLPAGRYSLNVTYNYPVHYFDGRKRMILSTISWMGGKNPFLGIAYIAGVSISFLLGVLLVINHKY
RNSNTADITI

SGPTRRRLEQKLISEEDLAANDILDYKDDDDKV

Tag:	C-Myc/DDK
Predicted MW:	40.5 kDa
Concentration:	>0.05 µg/µL as determined by microplate BCA method
Purity:	> 80% as determined by SDS-PAGE and Coomassie blue staining
Buffer:	25 mM Tris-HCl, 100 mM glycine, pH 7.3, 10% glycerol
Preparation:	Recombinant protein was captured through anti-DDK affinity column followed by conventional chromatography steps.
Note:	For testing in cell culture applications, please filter before use. Note that you may experience some loss of protein during the filtration process.
Storage:	Store at -80°C.
Stability:	Stable for 12 months from the date of receipt of the product under proper storage and handling conditions. Avoid repeated freeze-thaw cycles.
RefSeq:	<u>NP_060717</u>



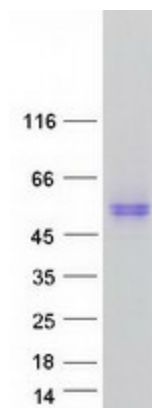
[View online »](#)

Locus ID: 55754
UniProt ID: [Q9NV96](#)
RefSeq Size: 4410
Cytogenetics: 6q14.1
RefSeq ORF: 1083
Synonyms: C6orf67; CDC50A

Summary: Accessory component of a P4-ATPase flippase complex which catalyzes the hydrolysis of ATP coupled to the transport of aminophospholipids from the outer to the inner leaflet of various membranes and ensures the maintenance of asymmetric distribution of phospholipids. Phospholipid translocation seems also to be implicated in vesicle formation and in uptake of lipid signaling molecules. The beta subunit may assist in binding of the phospholipid substrate. Required for the proper folding, assembly and ER to Golgi exit of the ATP8A2:TMEM30A flippase complex. ATP8A2:TMEM30A may be involved in regulation of neurite outgrowth, and, reconstituted to liposomes, predominantly transports phosphatidylserine (PS) and to a lesser extent phosphatidylethanolamine (PE). The ATP8A1:TMEM30A flippase complex seems to play a role in regulation of cell migration probably involving flippase-mediated translocation of phosphatidylethanolamine (PE) at the plasma membrane. Required for the formation of the ATP8A2, ATP8B1 and ATP8B2 P-type ATPase intermediate phosphoenzymes. Involved in uptake of platelet-activating factor (PAF), synthetic drug alkylphospholipid edelfosine, and, probably in association with ATP8B1, of perifosine. Also mediate the export of alpha subunits ATP8A1, ATP8B1, ATP8B2, ATP8B4, ATP10A, ATP10B, ATP10D, ATP11A, ATP11B and ATP11C from the ER to other membrane localizations.[UniProtKB/Swiss-Prot Function]

Protein Families: Druggable Genome, Transmembrane

Product images:



Coomassie blue staining of purified TMEM30A protein (Cat# [TP317257]). The protein was produced from HEK293T cells transfected with TMEM30A cDNA clone (Cat# [RC217257]) using MegaTran 2.0 (Cat# [TT210002]).