

## Product datasheet for **TP317237**

### G CSF (CSF3) (NM\_000759) Human Recombinant Protein

#### Product data:

Product Type:	Recombinant Proteins
Description:	Recombinant protein of human colony stimulating factor 3 (granulocyte) (CSF3), transcript variant 1, 20 µg
Species:	Human
Expression Host:	HEK293T
Expression cDNA Clone or AA Sequence:	>RC217237 representing NM_000759 <b>Red</b> =Cloning site <b>Green</b> =Tags(s)
	 MAGPATQSPMKLMALQLLLWHSALWTVQEATPLGPASSLPQSFLKCLEQVRKIQGDGAALQEKLVSECA TYKLCHPEELVLLGHSLGIPWAPLSSCPSQALQLAGCLSQLHSGFLYQGLLQALEGISPELGPTLDTLQ LDVADFATTIWQQMEELGMAPALQPTQGAMPAFASAFQRRAGGVLVASHLQSFLEVSYRVLRHLAQP  <b>TRTRPLEQKLISEEDLAANDILDYKDDDDKV</b>
Tag:	C-Myc/DDK
Predicted MW:	18.9 kDa
Concentration:	>0.05 µg/µL as determined by microplate BCA method
Purity:	> 80% as determined by SDS-PAGE and Coomassie blue staining
Buffer:	25 mM Tris-HCl, 100 mM glycine, pH 7.3, 10% glycerol
Preparation:	Recombinant protein was captured through anti-DDK affinity column followed by conventional chromatography steps.
Note:	For testing in cell culture applications, please filter before use. Note that you may experience some loss of protein during the filtration process.
Storage:	Store at -80°C.
Stability:	Stable for 12 months from the date of receipt of the product under proper storage and handling conditions. Avoid repeated freeze-thaw cycles.
RefSeq:	<a href="#">NP_000750</a>
Locus ID:	1440
UniProt ID:	<a href="#">P09919</a> , <a href="#">Q8N4W3</a>



[View online »](#)

RefSeq Size: 1518

Cytogenetics: 17q21.1

RefSeq ORF: 621

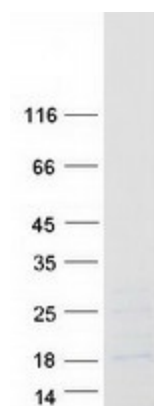
Synonyms: C17orf33; CSF3OS; GCSF

**Summary:** This gene encodes a member of the IL-6 superfamily of cytokines. The encoded cytokine controls the production, differentiation, and function of granulocytes. Granulocytes are a type of white blood cell that are part of the innate immune response. A modified form of this protein is commonly administered to manage chemotherapy-induced neutropenia. Alternatively spliced transcript variants have been described for this gene. [provided by RefSeq, May 2020]

**Protein Families:** Druggable Genome, ES Cell Differentiation/IPS, Secreted Protein

**Protein Pathways:** Cytokine-cytokine receptor interaction, Hematopoietic cell lineage, Jak-STAT signaling pathway

### Product images:



Coomassie blue staining of purified CSF3 protein (Cat# TP317237). The protein was produced from HEK293T cells transfected with CSF3 cDNA clone (Cat# [RC217237]) using MegaTran 2.0 (Cat# [TT210002]).