

Product datasheet for TP317236L

Cytochrome P450 2B6 (CYP2B6) (NM_000767) Human Recombinant Protein

Product data:

Product Type:	Recombinant Proteins
Description:	Recombinant protein of human cytochrome P450, family 2, subfamily B, polypeptide 6 (CYP2B6), 1 mg
Species:	Human
Expression Host:	HEK293T
Expression cDNA Clone or AA Sequence:	>RC217236 representing NM_000767 Red=Cloning site Green=Tags(s)

MELSVLLFLALLTGLLLLLVQCHPNTHDRLPPGPRPLPLLGNLLQMDRRGLLKSFLRFREKYGDVFTVHL
GPRPVVMLCGVEAIREALVDKAEAFSGRGKIAMVDPFFRGYGVIFANGNRWKVLRRESVTTMRDFGMGKR
SVEERIQEEAQCLIEELRKS GALMDPTFLFQSITANIICSIVFGKRFHYQDQEFKMLNLFYQTFSLIS
SVFGQLFELFSGFLKYFPGAHRQVYKNLQEINAYIGHSVEKHRETLDPSAPKDLIDTYLLHMEKEKSNNAH
SEFSHQNLNLNTLSLFFAGTETTSTTLRYGFLMLKYPHVAERVYREIEQVIGPHRPPPELHDRAKMPYTE
AVIYEIQRFSDLLPMGVPHIVTQHTSFRGYIIPKDTEVFLILSTALHDPHYFEKPDFAFNPDHFLDANGAL
KKTEAFIPFSLGKRICLGEGIARAELFFTTILQNFMSASPAPEDIDLTPQCEGVGKIPPTYQIRFLP
R

TRTRPLEQKLISEEDLAANDILDYKDDDDKV

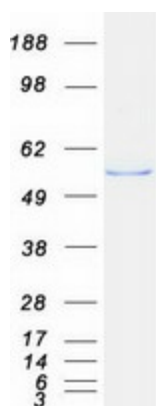
Tag:	C-Myc/DDK
Predicted MW:	56.1 kDa
Concentration:	>0.05 µg/µL as determined by microplate BCA method
Purity:	> 80% as determined by SDS-PAGE and Coomassie blue staining
Buffer:	25 mM Tris-HCl, 100 mM glycine, pH 7.3, 10% glycerol
Preparation:	Recombinant protein was captured through anti-DDK affinity column followed by conventional chromatography steps.
Note:	For testing in cell culture applications, please filter before use. Note that you may experience some loss of protein during the filtration process.
Storage:	Store at -80°C.



[View online »](#)

Stability:	Stable for 12 months from the date of receipt of the product under proper storage and handling conditions. Avoid repeated freeze-thaw cycles.
RefSeq:	NP_000758
Locus ID:	1555
UniProt ID:	P20813
RefSeq Size:	3052
Cytogenetics:	19q13.2
RefSeq ORF:	1473
Synonyms:	CPB6; CYP2B; CYP2B7; CYP2B7P; CYP11B6; EFVM; IIB1; P450
Summary:	This gene, CYP2B6, encodes a member of the cytochrome P450 superfamily of enzymes. The cytochrome P450 proteins are monooxygenases which catalyze many reactions involved in drug metabolism and synthesis of cholesterol, steroids and other lipids. This protein localizes to the endoplasmic reticulum and its expression is induced by phenobarbital. The enzyme is known to metabolize some xenobiotics, such as the anti-cancer drugs cyclophosphamide and ifosphamide. Transcript variants for this gene have been described; however, it has not been resolved whether these transcripts are in fact produced by this gene or by a closely related pseudogene, CYP2B7. Both the gene and the pseudogene are located in the middle of a CYP2A pseudogene found in a large cluster of cytochrome P450 genes from the CYP2A, CYP2B and CYP2F subfamilies on chromosome 19q. [provided by RefSeq, Jul 2008]
Protein Families:	Druggable Genome, P450
Protein Pathways:	Arachidonic acid metabolism, Drug metabolism - cytochrome P450, Metabolic pathways, Metabolism of xenobiotics by cytochrome P450, Retinol metabolism

Product images:



Coomassie blue staining of purified CYP2B6 protein (Cat# [TP317236]). The protein was produced from HEK293T cells transfected with CYP2B6 cDNA clone (Cat# [RC217236]) using MegaTran 2.0 (Cat# [TT210002]).