

## Product datasheet for **TP317219L**

### **METTL21C (NM\_001010977) Human Recombinant Protein**

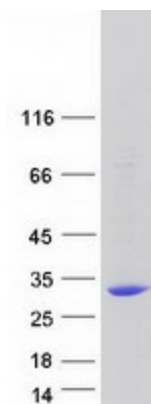
#### **Product data:**

|  |  |
|--|--|
| <b>Product Type:</b>                         | Recombinant Proteins   |
| <b>Description:</b>                          | Recombinant protein of human chromosome 13 open reading frame 39 (C13orf39), 1 mg  |
| <b>Species:</b>                              | Human  |
| <b>Expression Host:</b>                      | HEK293T  |
| <b>Expression cDNA Clone or AA Sequence:</b> | >RC217219 protein sequence<br><b>Red</b> =Cloning site <b>Green</b> =Tags(s)   |
|  | <br>MDVCLSSAQQPGRRGEGLSPPGGWLEAEKKGAPQKDSTGGVLEESNKIEPSLHSLQKFVPTDYASYTQEH<br>YRFAGKEIVIQESIESYGAVVWPGAMALCQYLEEHAELNFQDAKILEIGAGPGLVSIVASILGAQVTAT<br>DLPDVLGNLQYNLLKNTLQCTAHLPEVKELVWGEDLDKNFPKSAFYDYVLASDVVYHHYFLDKLLTMV<br>YLSQPGTVLLWANKFRFSTDYEFLDKFKQVFDTTLLAEYPESSVKLFKILKWD<br><br><b>TRTRPLEQKLISEEDLAANDILDYKDDDDKV</b> |
| <b>Tag:</b>                                  | C-Myc/DDK  |
| <b>Predicted MW:</b>                         | 29.4 kDa   |
| <b>Concentration:</b>                        | >0.05 µg/µL as determined by microplate BCA method   |
| <b>Purity:</b>                               | > 80% as determined by SDS-PAGE and Coomassie blue staining  |
| <b>Buffer:</b>                               | 25 mM Tris-HCl, 100 mM glycine, pH 7.3, 10% glycerol   |
| <b>Preparation:</b>                          | Recombinant protein was captured through anti-DDK affinity column followed by conventional chromatography steps.   |
| <b>Note:</b>                                 | For testing in cell culture applications, please filter before use. Note that you may experience some loss of protein during the filtration process.   |
| <b>Storage:</b>                              | Store at -80°C.  |
| <b>Stability:</b>                            | Stable for 12 months from the date of receipt of the product under proper storage and handling conditions. Avoid repeated freeze-thaw cycles.  |
| <b>RefSeq:</b>                               | <u><a href="#">NP_001010977</a></u>  |
| <b>Locus ID:</b>                             | 196541   |
| <b>UniProt ID:</b>                           | <u><a href="#">Q5VZV1</a></u>  |



[View online »](#)

|                   |  |
|-------------------|--|
| RefSeq Size:      | 1115   |
| Cytogenetics:     | 13q33.1  |
| RefSeq ORF:       | 792  |
| Synonyms:         | C13orf39   |
| Summary:          | Protein-lysine methyltransferase.[UniProtKB/Swiss-Prot Function] |
| Protein Families: | Druggable Genome   |

**Product images:**

Coomassie blue staining of purified METTL21C protein (Cat# [TP317219]). The protein was produced from HEK293T cells transfected with METTL21C cDNA clone (Cat# [RC217219]) using MegaTran 2.0 (Cat# [TT210002]).