

## Product datasheet for TP317186M

### HELB (NM\_033647) Human Recombinant Protein

#### Product data:

Product Type:	Recombinant Proteins
Description:	Recombinant protein of human helicase (DNA) B (HELB), 100 µg
Species:	Human
Expression Host:	HEK293T
Expression cDNA Clone or AA Sequence:	>RC217186 representing NM_033647 Red=Cloning site Green=Tags(s)

MARSSPYLRQLQGPELLPRDLVEEDDDYLNDDEEEDSVFIDAEELCSGGVKAGSLPGCLRVSIDENT  
QETCKVFGFRPITGAWWRVKVQVKPVVGSRSYQYQVQGFPSYFLQSDMSPPNQKHICALFLKECEVSSDD  
VNKFLTWWKEVSNYKNLNFENLRETLRTHFKETGRKDQKQPTQNGQEELFLDNEMSLPLENTIPFRNVMT  
ALQFPKIMEFLPVLLPRHFKWIIGSGSKEMLKEIEEILGTHPWKLGFSKITYREWKLRLRCEASWIAFCQC  
ESLLQLMTDLEKNALIMYSRLKQICREDGHTYEVNDLTLTSLNHMSFHAASESLKFLKDIGVVTYEKSC  
VFPYDLYHAERIAAFSICDLMKKPPWHLCVDVEKVLASIHHTTKPENSSDDALNESKPDEVRLNPVDVVD  
TQDNGDHIWTNGENEINAEISEVQLDQDQVEVPLDRDQVAALEMICSNPVTVISGKGGCGKTTIVSRLFK  
HIEQLEEREVKKACEDFEQDQNASEEWITFTEQSQLEADKAIEVLLTAPTGKAAGLLRQKTGLHAYTLCQ  
VNYSFYSWTQTMMTTNKPWKFSSVRVLVWDEGSLVSVGIFKSVLNLCEHSKLSKLIILGDIRQLPSIEP  
GNLLKDLFETLKSRCNAIELKTNHRAESQLIVDNATRISRQFPKFDALNIDNPTLPISIQDKTFIFV  
RLPEEDASSQSSKTNHHSCLYSAVKTLLENLQNAKTSQFIARRQDCDLINDCCCKHYTGHLTKDHQS  
RLVFGIGDKICCTRNYLSDLLPENISGSQQNNDLDASSEDVSGTLPDFAKNKRDVFESNVRCLNGEIFFI  
TNDVTDVTFGKRRSLTINMAGLEVTVDFKMKYCRIKHAWARTIHTFQGSEEQTWVYVVGKAGRQHWQ  
HVYTAVTRGRCRVYVIAEESQLRNAIMKNSFPRKTRKHFQSKLSSSGAPPADFLSPRKSSGDSGGPSI  
PSASPLPVTDHAMTNDVTWSEASSPDERTLTFAERWQLSSPDGVDTDLDPKSRASKRTCGVNDDES  
PSIFMVGESPVSSRLQNLRLNLIPLRQLFKPTDNQET

TRTRPLEQKLISEEDLAANDILDYKDDDDKV

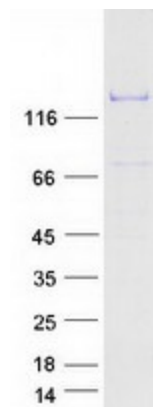
Tag:	C-Myc/DDK
Predicted MW:	123.1 kDa
Concentration:	>0.05 µg/µL as determined by microplate BCA method
Purity:	> 80% as determined by SDS-PAGE and Coomassie blue staining
Buffer:	25 mM Tris-HCl, 100 mM glycine, pH 7.3, 10% glycerol



[View online »](#)

<b>Preparation:</b>	Recombinant protein was captured through anti-DDK affinity column followed by conventional chromatography steps.
<b>Note:</b>	For testing in cell culture applications, please filter before use. Note that you may experience some loss of protein during the filtration process.
<b>Storage:</b>	Store at -80°C.
<b>Stability:</b>	Stable for 12 months from the date of receipt of the product under proper storage and handling conditions. Avoid repeated freeze-thaw cycles.
<b>RefSeq:</b>	<a href="#">NP_387467</a>
<b>Locus ID:</b>	92797
<b>UniProt ID:</b>	<a href="#">Q8NG08</a>
<b>RefSeq Size:</b>	3368
<b>Cytogenetics:</b>	12q
<b>RefSeq ORF:</b>	3261
<b>Synonyms:</b>	DHB; hDHB
<b>Summary:</b>	This gene encodes a DNA-dependent ATPase which catalyzes the unwinding of DNA necessary for DNA replication, repair, recombination, and transcription. This gene is thought to function specifically during the S phase entry of the cell cycle. Alternative splicing results in multiple transcript variants. [provided by RefSeq, Feb 2016]

### Product images:



Coomassie blue staining of purified HELB protein (Cat# [TP317186]). The protein was produced from HEK293T cells transfected with HELB cDNA clone (Cat# [RC217186]) using MegaTran 2.0 (Cat# [TT210002]).